

# TABLE OF CONTENTS

	PAGE
<b>AIR DRYER AND RELATED PARTS</b>	
AIR DRYER CARTRIDGE KITS.....	5
AIR DRYER HEATER, THERMOSTAT & WIRING HARNESS.....	6-7
<b>END COVER AND MOUNTING BRACKETS.....</b>	<b>7-8</b>
<b>ALCOHOL EVAPORATOR.....</b>	<b>9</b>
PISTON PURGE, PURGE KITS.....	7-9
<b>COMPLETE AIR DRYER ASSY.....</b>	<b>4,6</b>
COMPLETE PURGE VALVES.....	9
<b>AIR HORNS AND RELATED PARTS</b>	
AIR HORN AND AIR HORN VALVE.....	41-42
<b>AIR HOSE ASSEMBLIES</b>	
AIR HOSE ASSEMBLY.....	58
AIR HOSE SEPARATORS.....	58
GLADHANDS & GLADHAND SEALS.....	56
HOSE CLAMPS.....	58
SUPPORT SPRINGS (AIR HOSE).....	58
<b>WHEEL BEARING AND SEALS.....</b>	<b>55</b>
<b>BOBTAIL STYLE PROPORTIONING VALVE</b>	
BOBTAIL STYLE VALVE.....	15
<b>BRAKE CALIPERS</b>	
TWIN PISTON BRAKE CALIPERS (STEEL PISTON).....	49
<b>BRAKE HARDWARE KITS</b>	
15" FRONT SINGLE ANCHOR PIN.....	52
15" X 4" ROCKWELL® STYLE Q FRONT.....	52
<b>15" DOUBLE WEB Q+ STYLE.....</b>	<b>52</b>
16.5" ES (EXTENDED SERVICE).....	52
16.5" ES-11 (EXTENDED SERVICE).....	52
16.5" EATON® STYL ESINGLE ANCHOR PIN.....	52
16.5" FRUEHAUF®/PROPAR® (XEM) STYLE LATE DESIGN.....	52
16.5" HD Q+ ROCKWELL® STYLE (LESS BUSHINGS).....	53
16.5" HD Q+ ROCKWELL® STYLE.....	53
16.5" "P" ROCKWELL® STYLE.....	53
<b>16.5" HD QT STYLE STYLE (SHORT KIT).....</b>	<b>52</b>
<b>CHECK VALVES - ALL</b>	
SINGLE CHECK VALVES.....	45-46
DOUBLE CHECK VALVES.....	47
<b>DASH CONTROL VALVES</b>	
CONTROL MODULE VALVES.....	31
<b>DRAIN VALVES</b>	
AUTOMATIC VALVES.....	4
MANUAL VALVES.....	5
<b>ELECTRIC SOCKET &amp; PLUG ASSY</b>	
4 WAY, 6 WAY, 7 WAY SOCKETS & PLUGS.....	59
<b>EMERGENCY BRAKE SHOES &amp; SPRINGS</b>	
BRAKE SHOES.....	50
SPRINGS.....	50
<b>EMERGENCY RELAY VALVES</b>	
ALL MODELS.....	16-18, 60
<b>FOOT VALVES</b>	
ALL FOOT VALVES.....	22-23
<b>GOVERNORS &amp; KITS</b>	
ALL.....	3-5
<b>HUB CAPS / OIL CAPS</b>	
HUB CAPS AND GASKETS.....	54
<b>HYDRAULIC DISK PADS FOR CALIPERS</b>	
DISK PADS - HEAVY DUTY AND LIGHT DUTY.....	51
<b>JUNCTION BOX</b>	
7 TERMINAL JUNCTION BOX.....	57
<b>LEVELING VALVE/HEIGHT CONTROL VALVES</b>	
ALL MODELS.....	47
<b>LIMITING FRONT AXLE RATIO VALVE</b>	
LIMITING VALVE.....	44
<b>PRESSURE PROTECTION AND PILOT VALVES (NEW WAY)</b>	
PILOT VALVE.....	48
PRESSURE PROTECTION VALVE.....	48, 60
<b>AIR REGULATING VALVE.....</b>	<b>48</b>
<b>PRESSURE RELEASE VALVES</b>	
PRESSURE RELEASE VALVE.....	47

PARTS LISTED IN THIS CATALOG ARE NOT NECESSARILY MANUFACTURED BY THE ORIGINAL EQUIPMENT MANUFACTURER AND ANY REFERENCE TO THE TRADEMARKS OR PART NUMBERS OF OTHERS ARE FOR CROSS REFERENCE INFORMATIONAL PURPOSES ONLY. THE PHOTOS PROVIDED HEREIN ARE PROVIDED ONLY FOR ILLUSTRATIVE PURPOSES. THE ACTUAL PRODUCTS SUPPLIED MAY DIFFER. THE TRADEMARKS OF OTHERS REFERRED TO HEREIN ARE OWNED BY THEIR RESPECTIVE COMPANIES AND ARE NOT AFFILIATED IN ANY WAY WITH MIDWEST TRUCK & AUTO PARTS, INC.®, MOTIVE GEAR®, MOTIVE GEAR PERFORMANCE®, AND WORLD AMERICAN™. THESE DIVISIONS ARE THE REGISTERED OR PENDING TRADEMARKS OF MIDWEST TRUCK & AUTO PARTS, INC.™. USE OF THE "®" IN CONNECTION WITH A MARK OF MIDWEST TRUCK & AUTO PARTS, INC.™ INDICATES THAT THE MARK IS REGISTERED IN AT LEAST THE UNITED STATES. NO REPRESENTATION IS MADE WITH RESPECT TO THE SOURCE OF MANUFACTURE OF ANY PARTICULAR PART. WHILE EVERY EFFORT IS MADE TO PROVIDE ACCURATE INFORMATION, NO GUARANTEE IS PROVIDED AS TO THE ACCURACY OF THE INFORMATION CONTAINED HEREIN. WE ARE NOT RESPONSIBLE FOR TYPOGRAPHICAL ERRORS. © 2009, MIDWEST TRUCK & AUTO PARTS, INC.™ ALL RIGHTS RESERVED.

# TABLE OF CONTENTS

	PAGE
PUSH/PULL VALVES	
ALL MODELS .....	32-34
KNOB AND PINS .....	34
QUICK RELEASE VALVES (ALL)	
QUICK RELEASE - ALL .....	43
QUICK RELEASE & LIMITING .....	44
RELAY VALVES	
ALL RELAY VALVES .....	15-21
SAFETY VALVES	
ALL SAFETY VALVES .....	26
SLACK ADJUSTERS	
MANUAL SLACK ADJUSTERS (STRAIGHT ARM) .....	10
AUTOMATIC SLACK ADJUSTERS .....	11
HALDEX® STYLE AUTOMATIC SLACK ADJUSTERS .....	12-13
CREWSON® STYLE AUTO-CHECK .....	14
SOLENOID VALVES	
FUEL SOLENOID .....	39
ALL SOLENOIDS .....	39
SPRINGBRAKE STYLE CONTROLS	
ALL SPRINGBRAKE STYLE VALVES.....	25-26
SPRINGBRAKE & SERVICE BRAKE ASSEMBLIES & RELATED PARTS	
24/24 TANDEM SPRINGBRAKE STYLE (CLAMPED) .....	27
30/30T TANDEM SPRINGBRAKE STYLE (CLAMPED).....	27
30/30 TANDEM SPRINGBRAKE STYLE (SEALED) .....	37
SPRINGBRAKE STYLE DIAPHRAGMS .....	29
SERVICE BRAKE CHAMBERS.....	30
PIGGYBACK KITS 30/30 .....	30
CLEVIS KITS .....	38-29
SPRINGBRAKE STYLE SPRING .....	29
SWITCHES: AIR & PNEUMATIC	
LOW PRESSURE SWITCHES .....	41, 57
STOP LIGHT SWITCHES .....	41, 57
SWITCHES: AIR & PNEUMATIC	
TRAILER - EMERGENCY STOP LIGHT SWITCHES.....	57
TRACTOR PROTECTION VALVES	
ALL TRACTOR VALVES .....	24
TRANSIT BUS BRAKE CHAMBERS .....	62
TRANSMISSION AIR SHIFT VALVES	
FULLER® STYLE .....	36-38
ROCKWELL®/MERITOR® STYLE .....	38-39
TRANSMISSION SELECTOR VALVES .....	36
2-SPEED ELECTRIC MOTORS	
EATON®/DANA® STYLE MOTORS - EARLY & LATE .....	16
TURN SIGNAL SWITCHES .....	61



WORLD AMERICAN PARTS SHOWN ON THIS PAGE ARE NOT MANUFACTURED BY THE ORIGINAL EQUIPMENT MANUFACTURER (OEM). ANY REFERENCE TO TRADEMARKS OF OTHERS ARE FOR CROSS-REFERENCE PURPOSES ONLY. BENDIX® IS A FEDERALLY REGISTERED TRADEMARK OF HONEYWELL INTERNATIONAL INC. D-2™ IS A TRADEMARK OF BENDIX® COMMERCIAL VEHICLE SYSTEMS, LLC. THE OEM'S ARE NOT AFFILIATED WITH WORLD AMERICAN™.

## GOVERNERS AND GOVERNOR REPAIR KIT

### GOVERNOR



WA#	REPLACES	DESCRIPTION
<b>WA275491</b>	BENDIX® D-2™ 275491	(OPERATING RANGE 100-120 psi (ADJUSTABLE) ALL PORTS 1/8" N.P.T.



WA#	REPLACES	DESCRIPTION
<b>WAKN18530</b>	MIDLAND® KN18530	(OPERATING RANGE 100-120 psi (ADJUSTABLE) ALL PORTS 1/8" N.P.T.

### GOVERNOR REPAIR KIT



WA#	REPLACES	DESCRIPTION
<b>WA276121</b>	BENDIX® 276121	REPAIR KIT



**WWW.WORLDAMERICAN.COM**  
YOUR #1 SOURCE FOR HEAVY DUTY AFTERMARKET COMPONENTS.

**WABCO® STYLE GOVERNOR , WABCO® STYLE AIR DRYER ASSY.,  
WABCO® STYLE CARTRIDGE, AUTOMATIC DRAIN VALVES**

**WABCO® STYLE GOVERNOR**



WA#	REPLACES	DESCRIPTION
<b>WA9753034730</b>	WABCO® 975-303-473-0 KNOR® DR-3500 MERCEDES® #002-431-63-06 MERCEDES® #002-431-00-06 MERCEDES® #002-431-49-06 MERCEDES® #002-431-52-06 MERCEDES® #002-431-60-06	UNLOADED & REGULAR VALVE

**WABCO® STYLE AIR DRYER ASSEMBLY**



WA#	REPLACES	DESCRIPTION
<b>WAR955205</b>	BENDIX® 800887, 432413	COMPLETE ASSEMBLY

**WABCO® STYLE CARTRIDGE**



WA#	REPLACES	DESCRIPTION
<b>WA109994</b>	ROCKWELL® R950011	SPIN ON VALVE

**AUTOMATIC DRAIN VALVE**



WA#	REPLACES	DESCRIPTION
<b>WA281923</b>	BENDIX® 281923 MIDLAND® KN24000	INCLUDES FILTER/ADAPTER FOR 1/4" P.T. MOUNTING



WA#	REPLACES	DESCRIPTION
<b>WAKN24000</b>	MIDLAND® KN24000	AUTOMATIC NON-HEATED DRAIN VALVE ALL PORTS: 1/4" - 18



WA#	REPLACES	DESCRIPTION
<b>WAKN24001</b>	MIDLAND® KN24001	AUTOMATIC HEATED DRAIN VALVE ALL PORTS: 1/4" - 18 (12 Volt - 5 Amp)

# MANUAL DRAIN VALVE, GOVERNOR, DRYER CARTRIDGE KIT

## MANUAL DRAIN VALVE



WA#	REPLACES	DESCRIPTION
<b>WA12105</b>	MIDLAND® 12105/KN21004	MANUAL DRAIN VALVE W/5 FT. CORD



WA#	REPLACES	DESCRIPTION
<b>WA9054088</b>	NEWAY® 9054088	MANUAL DRAIN VALVE

## GOVERNOR



WA#	REPLACES	DESCRIPTION
<b>WA284358</b>	BENDIX® D-2™ 284358	GOVERNOR SUPPLIED WITH HIGH TEMP. O-RINGS AND WATERPROOF COVER PSI 100-120 ADJUSTABLE

## DRYER CARTRIDGE KIT



WA#	REPLACES	DESCRIPTION
<b>WA107794</b>	BENDIX® AD-9™ 107794/107796	DESSICANT CARTRIDGE



WA#	REPLACES	DESCRIPTION
<b>WA104358</b>	BENDIX® AD-4™ 104358/103981	DESSICANT CARTRIDGE



WA#	REPLACES	DESCRIPTION
<b>WA65624</b>	BENDIX® AD-IP/AD-IS™ 065624, 109493X	NEW AD-IP/AD-IS™ CARTRIDGE

# WWW.WORLDAMERICAN.COM

YOUR #1 SOURCE FOR HEAVY DUTY AFTERMARKET COMPONENTS.

# COMPLETE AIR DRYER ASSEMBLIES, HEATER, THERMOSTAT & WIRING HARNESS

## NEW - COMPLETE AIR DRYER ASSEMBLY



WA#	REPLACES	DESCRIPTION
<b>WA9922-007</b>	BENDIX® AD-9™ 065225, 109685	NEW COMPLETE ASSEMBLY, 12 VOLT



WA#	REPLACES	DESCRIPTION
<b>WAP22-008</b>	BENDIX® AD-9™ 065224, 109688	NEW COMPLETE ASSY., 24 VOLT



WA#	REPLACES	DESCRIPTION
<b>WAP22-009</b>	BENDIX® AD-9™ 065225, 109685	NEW COMPLETE ASSY., 12 VOLT INCLUDES: WIRING HARNESS, BRACKET



WA#	REPLACES	DESCRIPTION
<b>WA65612X</b>	BENDIX® AD-AIP™ 065612X, 802744	COMPLETEREBUILT (NO CORE CHARGE) AD-IP/AD-IS™

## HEATER, THERMOSTAT, & WIRING HARNESS



WA#	REPLACES	DESCRIPTION
<b>WA109495</b>	BENDIX® AD-IP™, AD-SP™ 109495	12 Volt 90 Watt



WA#	REPLACES	DESCRIPTION
<b>WA109496</b>	BENDIX® AD-IP™, AD-SP™ 109496	24 Volt 90 Watt



WA#	REPLACES	DESCRIPTION
<b>WA109869</b>	BENDIX® AD-IP™, AD-SP™ 109869, 109871, 298948	WIRING HARNESS FOR BENDIX® AND WAGCO®



WA#	REPLACES	DESCRIPTION
<b>WA109578</b>	BENDIX® AD-9™ 109578	12 Volt 75 Watt

# HEATER, THERMOSTAT & WIRING HARNESS (cont.), PURGE & CHECK VALVE KITS, MOUNTING BRACKETS & CHECK VALVE

## HEATER, THERMOSTAT, & WIRING HARNESS (cont.)



WA#	REPLACES	DESCRIPTION
WA109579	BENDIX® AD-9™ 109579	24 VOLT, 75 WATT



WA#	REPLACES	DESCRIPTION
WA500259	BENDIX® AD-9™ 500259	24 VOLT, 100 WATT

## PURGE & CHECK VALVE KITS



WA#	REPLACES	DESCRIPTION
WA287053	BENDIX® AD-2™ 287053	Purge Valve Kit Boot, Diaphragm, Cover, Purge O-Ring



WA#	REPLACES	DESCRIPTION
WA287298	BENDIX® AD-2™ 287298	Check Valve Kit O-Rings, Spring, Ball

## MOUNTING BRACKET



WA#	REPLACES	DESCRIPTION
WA247954	BENDIX® AD-2™ 247954	Mounting Bracket Nut, Lock Washer, Cap Screw



WA#	REPLACES	DESCRIPTION
WA5001247	BENDIX® AD-IP™	BRACKET ASSY.

## CHECK VALVE



WA#	REPLACES	DESCRIPTION
WA107454	BENDIX® AD-2™ 107454	Check Valve Kit - New Style O-Ring and Grease

# END COVER & MOUNTING BRACKET KIT, PURGE VALVE & SEAL KIT CHECK VALVES & MOUNTING BRACKET KIT

## END COVER & MOUNTING BRACKET KIT



WA#	REPLACES	DESCRIPTION
<b>WA103980</b>	BENDIX® AD-4™ 103980	End Cover Kit Includes Purge Valves, Seal Kit, Piston Spring

## PURGE VALVE & SEAL KIT



WA#	REPLACES	DESCRIPTION
<b>WA103818</b>	BENDIX® AD-4™ 103818	Purge Valve Kit includes Diaphragm, Purge Valve, Grease, Boot and Sealing Ring

## CHECK VALVES



WA#	REPLACES	DESCRIPTION
<b>WA107799</b>	BENDIX® AD-9™ 107799	3/4" Check Valve O-Ring and Grease



WA#	REPLACES	DESCRIPTION
<b>WA107800</b>	BENDIX® AD-9™ 107800	1/2" Check Valve O-Ring and Grease

## MOUNTING BRACKET KIT



WA#	REPLACES	DESCRIPTION
<b>WA107695</b>	BENDIX® AD-9™ 107695	Mounting Bracket Cap Screw, Washer Lower and Upper Bracket Nut



# PISTON PURGE KITS, COMPLETE PURGE VALVES, ALCOHOL EVAPORATOR

## PISTON PURGE KITS



WA#	REPLACES	DESCRIPTION
<b>WA5005037</b>	BENDIX® AD-9™ 5005037/5004336 5004337/107798	Piston Purge (HARD) Seat Includes Springs, Purge Piston, Purge Valve, O-Rings and Grease



WA#	REPLACES	DESCRIPTION
<b>WA5005893</b>	BENDIX® AD-9™ 5005893	Piston Purge (SOFT) Seat Includes Springs, Purge Piston, Purge Valve, O-Rings and Grease

## COMPLETE PURGE VALVES



WA#	REPLACES	DESCRIPTION
<b>WA5004338</b>	BENDIX® AD-9™ 5004338/5004342	Purge Valve 24 Volt



WA#	REPLACES	DESCRIPTION
<b>WA800404</b>	BENDIX® AD-IP/AD-IS™ 800404, K2022105, 065626	PURGE VALVE AD-IP/AD-IS



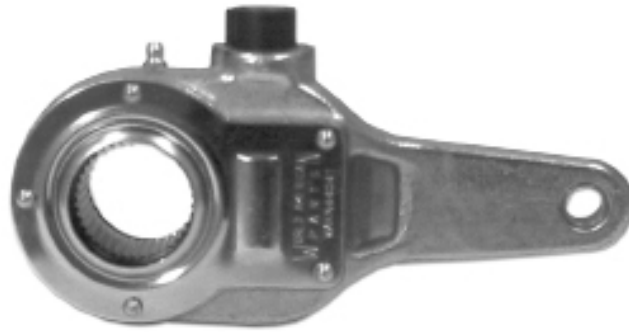
WA#	REPLACES	DESCRIPTION
<b>WA800405</b>	BENDIX® AD-9™ 800405/5004341	Purge Valve 12 Volt

## ALCOHOL EVAPORATOR



WA#	REPLACES	DESCRIPTION
<b>WA72420</b>	AE72420/72420	Alcohol Evaporator Style Capacity: 40 oz. of Methyl Alcohol Ports: 1/2" NPTF

# MANUAL STRAIGHT ARM SLACK ADJUSTERS



**WA#**  
**WAKN44041**  
REPLACES  
 MIDLAND® KN44041  
 EUCLID® E1574HD  
 MERITOR® R822007, R82407  
 BENDIX®  
 283411  
DESCRIPTION  
 1.60" - 37 SPLINE  
 6-DRILLING  
 5 RIVET HEAVY DUTY

**WA#**  
**WAKN44051**  
REPLACES  
 MIDLAND® KN44051  
 EUCLID® E2458  
 BENDIX®  
 286965  
DESCRIPTION  
 1.50" - 28 SPLINE  
 5-6 DRILLING  
 5 RIVET HEAVY DUTY

**WA#**  
**WAKN44061**  
REPLACES  
 MIDLAND® KN44061  
 EUCLID® E2459HD  
 MERITOR® R822004, R824004  
 BENDIX®  
 288753  
DESCRIPTION  
 1.50" - 28 SPLINE  
 5-1/2 - 6-1/2 DRILLING  
 5 RIVET HEAVY DUTY

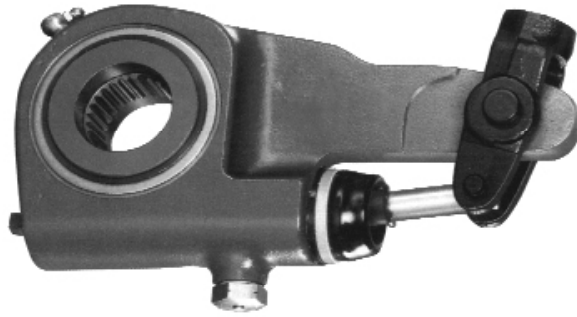
**WA#**  
**WAKN44071**  
REPLACES  
 MIDLAND® KN44071  
 EUCLID® E2458HD  
 MERITOR® R822003  
 BENDIX®  
 288282  
DESCRIPTION  
 1.50" - 28 SPLINE  
 5, 6, 7 DRILLING  
 5 RIVET HEAVY DUTY

**WA#**  
**WAKN47001**  
REPLACES  
 MIDLAND® KN47001  
 EUCLID® E612HD  
 MERITOR® R822000  
 BENDIX®  
 278323  
DESCRIPTION  
 1.50" - 10 SPLINE  
 5-6-7 DRILLING  
 5 RIVET HEAVY DUTY

**WA#**  
**WAKN47011**  
REPLACES  
 MIDLAND® KN47011  
 EUCLID® E940HD  
 MERITOR® R822001  
 BENDIX®  
 278321  
DESCRIPTION  
 1.50" - 10 SPLINE  
 5-1/2 - 6-1/2 DRILLING  
 5 RIVET HEAVY DUTY

**WA#**  
**WAKN48001**  
REPLACES  
 MIDLAND® KN48001  
 EUCLID® E939  
 MERITOR® R822010, R824010  
 BENDIX® 278303  
DESCRIPTION  
 1.25" - 10 SPLINE  
 5-6 DRILLING

# AUTOMATIC SLACK ADJUSTERS



**WA#**  
**WA65167**

**REPLACES**  
MERITOR® R801003  
GLINITE® AS1138, AS1107  
BENDIX® 065167, 065403

**DESCRIPTION**  
ARM LENGTH 5-1/2"  
SPLINE 1-1/4"  
24 SPLINE

**WA#**  
**WA65170**

**REPLACES**  
MERITOR® R801043  
GUNITE® AS1132, AS1119  
BENDIX® 065170, 065700

**DESCRIPTION**  
ARM LENGTH 5-1/2"  
SPLINE 1-1/2"  
10 SPLINE

**WA#**  
**WA65172**

**REPLACES**  
MERITOR® R801040, R801044  
GUNITE® AS1133, AS1100  
BENDIX® 065172, 065344

**DESCRIPTION**  
ARM LENGTH 6"  
SPLINE 1-1/2"  
10 SPLINE

**WA#**  
**WA65174**

**REPLACES**  
MERITOR® R801079  
GUNITE® AS1140, AS1120  
BENDIX® 065174, 065247

**DESCRIPTION**  
ARM LENGTH 5-1/2"  
SPLINE 1-1/2"  
28 SPLINE

**WA#**  
**WA65175**

**REPLACES**  
MERITOR® R801071, R801075  
GUNITE® AS1141, AS1101  
BENDIX® 065175, 065176

**DESCRIPTION**  
ARM LENGTH 6"  
SPLINE 1-1/2"  
28 SPLINE

**WA#**  
**WA65176**

**REPLACES**  
MERITOR® R801075, R801071  
GUNITE® AS1001  
BENDIX® 065176, 065175

**DESCRIPTION**  
ARM LENGTH 6"  
SPLINE 1-1/2"  
28 SPLINE

# HALDEX® STYLE AUTOMATIC SLACK ADJUSTERS

## WA#

**WA10140**

REPLACES

HALDEX® 400-10140

### DESCRIPTION

AUTOMATIC  
SLACK ADJUSTER  
1-1/2" - 28 SPLINE  
5" & 6" C-C LENGTH  
34 DEGREE  
CASTING ANGLE  
(ANCHOR) STRAP



## WA#

**WA10141**

REPLACES

HALDEX® 400-10141

### DESCRIPTION

AUTOMATIC  
SLACK ADJUSTER  
1-1/2" - 28 SPLINE  
5-1/2" & 6-1/2"  
C-C LENGTH  
34 DEGREE  
CASTING ANGLE  
(ANCHOR) STRAP

## WA#

**WA10142**

REPLACES

HALDEX® 400-10142

### DESCRIPTION

AUTOMATIC  
SLACK ADJUSTER  
1-1/2" - 10 SPLINE  
5" & 6" C-C LENGTH  
34 DEGREE  
CASTING ANGLE  
(ANCHOR) STRAP

## WA#

**WA10143**

REPLACES

HALDEX® 400-10143

### DESCRIPTION

AUTOMATIC  
SLACK ADJUSTER  
1-1/2" - 10 SPLINE  
5-1/2" & 6-1/2"  
C-C LENGTH  
34 DEGREE  
CASTING ANGLE  
(ANCHOR) STRAP

## WA#

**WA10144**

REPLACES

HALDEX® 400-10144

### DESCRIPTION

AUTOMATIC  
SLACK ADJUSTER  
1-1/2" - 28 SPLINE  
6" C-C LENGTH  
16 DEGREE  
CASTING ANGLE  
(ANCHOR) CLAMP

## HALDEX® STYLE AUTOMATIC SLACK ADJUSTERS (CONT.)

**WA#**  
**WA10211**  
**REPLACES**  
HALDEX® 400-10211

**DESCRIPTION**  
AUTOMATIC  
SLACK ADJUSTER  
1-1/2" - 28 SPLINE  
5-1/2" C-C LENGTH  
0 DEGREE  
CASTING ANGLE  
(ANCHOR) PLATE + FLAT STUD



**WA#**  
**WA10214**  
**REPLACES**  
HALDEX® 400-10214

**DESCRIPTION**  
AUTOMATIC  
SLACK ADJUSTER  
1-5/8" - 37 SPLINE  
6" C-C LENGTH  
0 DEGREE  
CASTING ANGLE  
(ANCHOR) PLATE + FLAT STUD

**WA#**  
**WA10216**  
**REPLACES**  
HALDEX® 400-10216

**DESCRIPTION**  
AUTOMATIC  
SLACK ADJUSTER  
1-1/2" - 10 SPLINE  
6" C-C LENGTH  
0 DEGREE  
CASTING ANGLE  
(ANCHOR) PLATE + FLAT STUD

**WA#**  
**WA10212**  
**REPLACES**  
HALDEX® 400-10212

**DESCRIPTION**  
AUTOMATIC  
SLACK ADJUSTER  
1-1/2" - 28 SPLINE  
6" C-C LENGTH  
0 DEGREE  
CASTING ANGLE  
(ANCHOR) PLATE + FLAT STUD

**WA#**  
**WA10305**  
**REPLACES**  
HALDEX® 400-10305

**DESCRIPTION**  
AUTOMATIC  
SLACK ADJUSTER  
1-1/2" - 28 SPLINE  
6" C-C LENGTH  
35 DEGREE  
CASTING ANGLE  
(ANCHOR) PLATE + FLAT STUD

## CREWSON® STANDARD AUTOMATIC & AUTO-CHECK SLACK ADJUSTERS

### CREWSON® STANDARD AUTOMATIC SLACK ADJUSTERS

WA#	CREWSON® #	CHAMBER® SIZE	SPLINE SIZE	CLEVIS	ARM LENGTH
WA21102	21102	ALL	1-1/2" - 10	5/8" - 18 STR	5.5, 6.5
WA21103	21103	ALL	1-1/2" - 10	5/8" - 18 STR	5.0, 6.0
WA22102	22102	ALL	1-1/2" - 28	5/8" - 18 STR	5.5, 6.5
WA22103	22103	ALL	1-1/2" - 28	5/8" - 18 STR	5.0, 6.0
WA23102	23102	ALL	1-5/8" - 37	5/8" - 18 STR	5.5, 6.5
WA24100	24100	ALL	1-1/4" - 10	5/8" - 18 STR	5.5, 6.0
WA24102	24102	ALL	1-1/4" - 10	5/8" - 18 STR	5.5, 6.5
WA24103	24103	ALL	1-1/4" - 10	5/8" - 18 STR	5.0,
WA25100	25100	ALL	1-1/4" - 10	5/8" - 18 STR	5.5
WA25102	25102	ALL	1-1/4" - 24	5/8" - 18 STR	5.5, 6.5
WA25103	25103	ALL	1-1/4" - 24	5/8" - 18 STR	5.0, 6.0

### CREWSON® AUTO-CHECK SLACK ADJUSTERS

WA#	CREWSON® #	CHAMBER SIZE	SPLINE SIZE	CLEVIS	ARM LENGTH
WA34100*	34100	20/24	1-1/4" - 10	5/8" - 18 STR	5.5
WA34200*	34200	16	1-1/4" - 10	1/2" - 20 STR	5.5
WA35100*	35100	20/24	1-1/4" - 24	5/8" - 18 STR	5.5
WA35200*	35200	16	1-1/4" - 24	1/2" - 20 STR	5.5
WA41100*	41100	30	1-1/2" - 10	5/8" - 18 STR	5.5
WA41106*	41106	30	1-1/2" - 10	5/8" - 18 STR	6.0
WA42100*	42100	30	1-1/2" - 28	5/8" - 18 STR	5.5
WA42106*	42106	30	1-1/2" - 28	5/8" - 18 STR	6.0
WA43100*	43100	30	1-5/8" - 37	5/8" - 18 STR	5.5
WA43106*	43106	30	1-5/8" - 37	5/8" - 18 STR	6.0

\* THE AUTO-CHECK STROKE INDICATOR ATTACHES TO THE AUTOMATIC BRAKE ADJUSTER; WHICH ELIMINATES THE NEED TO CRAWL UNDER VEHICLES TO DETERMINE AIR CHAMBER STROKE.  
NOT INTERCHANGEABLE WITH OTHER SLACK ADJUSTERS.

**SEALCO® STYLE EMERGENCY RELAY VALVE, SEALCO® STYLE EMERGENCY  
CARTRIDGE & BOBTAIL PROPORTIONING RELAY VALVE**

**SEALCO® STYLE EMERGENCY RELAY VALVE**



WA#	REPLACES	DESCRIPTION
<b>WAA1000</b>	SEALCO® A1000S	SUPPLY PORT: (1) 1/2" N.P.T. DELIVERY PORTS: (4) 1/4" N.P.T. CONTROL PORTS: (2) 1/4" N.P.T. EMERG. SUPPLY PORTS: (1) 1/4" N.P.T.



WA#	REPLACES	DESCRIPTION
<b>WA110200</b>	SEALCO® 110200	W/RATIO FEATURE

**SEALCO® STYLE EMERGENCY CARTRIDGE**



WA#	REPLACES	DESCRIPTION
<b>WAA10005A</b>	SEALCO® 1000-5A	FITS A1000 STYLE VALVE

**BOBTAIL STYLE PROPORTIONING RELAY VALVE**



WA#	REPLACES	DESCRIPTION
<b>WA65145</b>	BENDIX® BP-R1™ 065145	DELIVERY PORTS: 3/8" N.P.T. SUPPLY PORTS: 1/2" N.P.T. CONTROL PORTS: 1/8" N.P.T. SERVICE PORTS: 1/4" N.P.T. CRACK PRESSURE: 4 psi



WA#	REPLACES	DESCRIPTION
<b>WA65146</b>	BENDIX® BP-R1™ 065146	DELIVERY PORTS: 3/8" N.P.T. SUPPLY PORTS: 1/2" N.P.T. CONTROL PORTS: 1/8" N.P.T. SERVICE PORTS: 1/4" N.P.T. CRACK PRESSURE: 5.5 psi

## RELAY VALVES, REPAIR KIT, ELECTRIC 2-SPEED MOTORS

### RELAY VALVE



WA#	REPLACES	DESCRIPTION
<b>WAKN28071</b>	MIDLAND® KN28071	1/2 N.P.T., SUPPLY PORTS: 2 1/2 N.P.T., DELIVERY PORTS: 2 1/4 N.P.T., CONTROL PORT 1/8 N.P.T., CONTROL PORT WITH ANTI-COMPOUNDING, INCLUDES BRACKET



WA#	REPLACES	DESCRIPTION
<b>WAKN28510</b>	MIDLAND® KN28510 SEALCO® 110410 SEALCO® 110197	RG-2 SUPPLY PORTS: 3/8" P.T. DELIVERY PORTS: (1) 1/2" N.P.T. SERVICE PORTS: (2) 3/8" N.P.T. CONTROL PORTS: (1) 1/4" N.P.T. CRACK PRESSURE: 5-6 psi

### RELAY REPAIR KIT



WA#	REPLACES	DESCRIPTION
<b>WARN10HM</b>	MIDLAND® RN10HM	Repair Kit RG-2 Style

### EATON® / DANA® STYLE ELECTRIC 2-SPEED MOTORS



WA#	REPLACES	DESCRIPTION
<b>40635</b>	EATON® 40635	Electric Motor Early Style 1983 & Prior



WA#	REPLACES	DESCRIPTION
<b>113745R</b>	EATON® 113745	Electric Motor Late Style 1984 & Later

### RELAY VALVE



WA#	REPLACES	DESCRIPTION
<b>WAKN28080</b>	MIDLAND® KN28080	SUPPLY PORTS:(2) 1/2" N.P.T DELIVERY PORTS: (4) 3/8" N.P.T. CONTROL PORTS: (1) 3/8" N.P.T. CRACK PRESSURE: 7.0 psi



WA#	REPLACES	DESCRIPTION
<b>WAKN28500</b>	MIDLAND® KN28500 RG-2	Supply Port (2) 3/8" N.P.T. Delivery Ports (2) 3/8" N.P.T. Control Port (1) 1/4" N.P.T. CRACK PRESSUE: 5-6 psi



## RELAY VALVES (cont.) & EMERGENCY RELAY VALVES

### RELAY VALVE (cont.)



WA#	REPLACES	DESCRIPTION
<b>WAKN28520</b>	MIDLAND® KN28520 RG-2	SUPPLY PORTS: (2) 1/2" N.P.T. DELIVERY PORTS: (2) 1/2" N.P.T. CONTROL PORTS: (1) 1/4" N.P.T. CRACK PRESSURE: 5-6 psi.



WA#	REPLACES	DESCRIPTION
<b>WAKN28550</b>	MIDLAND® RG5	SUPPLY (A) 1/2 x 3/8 SUPPLY (B) PLUGGED DELIVERY (C) 3/8 DELIVERY (D) 3/8 CONTROL PORT 1/4 2 TANK + 3 VALVE TRAILER SYSTEM



WA#	REPLACES	DESCRIPTION
<b>WA110380</b>	SEALCO® 110380	(1) 3/8 N.P.T. CONTROL (1) 3/4 N.P.T. RES. (4) 3/8 N.P.T. DELIVERY CRACK PRESSURE: 1.5 P.S.I.



WA#	REPLACES	DESCRIPTION
<b>WA110415</b>	SEALCO® 110415	(1) 3/8 N.P.T. CONTROL (1) 3/4 N.P.T. RES. (4) 3/8 N.P.T. DELIVERY CRACK PRESSURE: 4.0 P.S.I.

### EMERGENCY RELAY VALVE (SERVICE)



WA	REPLACES	DESCRIPTION
<b>WA110470</b>	SEALCO® 110470	(1) EMERGENCY SUPPLY 3/8 N.P.T. (2) SERVICE CONTROL 3/8 N.P.T. CRACK PRESSURE: 4.5 P.S.I.



WA	REPLACES	DESCRIPTION
<b>WA110197</b>	SEALCO® 110197	(2) 3/8 N.P.T. CONTROL (1) 1/2 N.P.T. RES. (1) 3/8 N.P.T. DELIVERY CRACK PRESSURE: 4.0 P.S.I.



WA#	REPLACES	DESCRIPTION
<b>WA281865</b>	BENDIX® RE-6™ 281860	Supply Port (1) 3/4" N.P.T. Supply Port (1) 3/8" N.P.T. Delivery Ports (2) 3/8" N.P.T. Delivery Ports (2) 1/4" N.P.T. Service Port (1) 1/4" N.P.T. Emerg. Supply Port (1) 1/4" N.P.T.

# RELAY VALVE, EMERGENCY RELAY VALVE - 4 PORT & RELAY VALVE REPAIR KIT

## RELAY VALVE



WA#	REPLACES	DESCRIPTION
<b>WAKN28060</b>	MIDLAND® KN28060	DELIVERY PORTS: (2) 3/8" N.P.T. RESERVOIR PORTS: (2) 1/2" N.P.T. CONTROL PORT: (1) 3/8" N.P.T. CRACK PRESSURE: 4-5 psi

## EMERGENCY RELAY VALVE - 4 PORT



WA#	REPLACES	DESCRIPTION
<b>WAKN30400</b>	MIDLAND® KN30400 SEALCO® A71890 SEALCO® 99036	SUPPLY PORT: (1) 3/4" N.P.T. DELIVERY PORTS: (4) 3/8" N.P.T. SERVICE PORT: (1) 1/4" N.P.T. CRACKING PRESSURE: 4-5 psi. -CHARGING TYPE



WA	REPLACES	DESCRIPTION
<b>WAKN30200</b>	MIDLAN® KN30200	SERVICE INLET: 3/8 EMERGENCY INLET: 3/8 DELIVERY PORTS: (4) 3/8 AUXILIARY RES.: 1/2 CRACK PRESSURE: 3.0 psi -PRE 121 TRAILERS, CONVERTER DOLLIES FOUR PORT EMERGENCY RELAY



WA	REPLACES	DESCRIPTION
<b>WAKN30300</b>	MIDLAN® KN30300	SERVICE INLET: 1/4 EMERGENCY INLET: 1/4 DELIVERY: (4) 1/4 AUXILIARY RES. PLUGGED RES. :3/4 CRACK PRESSURE: 3.0 P.S.I. FOUR PORT EMERGENCY RELAY

## RELAY VALVE



WA#	REPLACES	DESCRIPTION
<b>WA279180</b>	BENDIX® R-6™ 279180, 280375	SUPPLY PORTS: (1) 1/2" N.P.T. DELIVERY PORTS: (4) 3/8" N.P.T. SERVICE PORTS: (1) 1/4" N.P.T.

## RELAY VALVE REPAIR KIT



WA#	REPLACES	DESCRIPTION
<b>WA280856</b>	BENDIX® R-6™ 280856	R-6™ REPAIR KIT

## RELAY VALVES & REPAIR KITS, R-8P STYLE RELAY VALVE & R-12P STYLE RELAY VALVE

### RELAY VALVE



WA#	REPLACES	DESCRIPTION
<b>WA286370</b>	BENDIX® R-8™ 286370 286371	SUPPLY PORTS: (2) 3/4" N.P.T. DELIVERY PORTS: (2) 1/2" N.P.T. SERVICE PORTS: (1) 1/4" N.P.T.

### RELAY VALVE REPAIR KIT



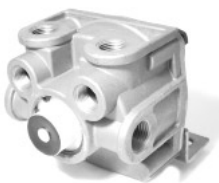
WA#	REPLACES	DESCRIPTION
<b>WA287370</b>	BENDIX® R-8™ 287370	R-8™ REPAIR KIT

### RELAY VALVE



WA#	REPLACES	DESCRIPTION
<b>WA287114</b>	BENDIX® R-8P™ 287114	Supply Ports (2) 3/4" N.P.T. Delivery Ports (2) 1/2" N.P.T. 1/4" Delivery N.P.T. Service Port 3/8" N.P.T. Overall Length 4-11/16"

### VERTICAL VALVE



WA#	REPLACES	DESCRIPTION
<b>WA65303</b>	BENDIX® R-12P™ 065303	VERTICAL & HORIZONTAL: (2) N.P.T. DELIVERY PORTS: (2) 3/8" N.P.T. SUPPLY PORTS: (2) 1/2" SERVICE PORTS: 1/4" N.P.T. OVERALL LENGTH: 3-7/8" 4 psi



# RELAY VALVES, & RELAY VALVE REPAIR KITS

## RELAY VALVES & RELATED REPAIR KITS



WA#	REPLACES	DESCRIPTION
<b>WA102626</b>	BERG® 12345 BENDIX® R-12™ 102626 102166	Supply Port (1) 1/2" N.P.T. Delivery Ports (4) 1/2" N.P.T. Service Port (1) 1/4" N.P.T. 4 psi Cracking Pressure

### RELAY VALVE REPAIR KIT



WA#	REPLACES	DESCRIPTION
<b>WA102802</b>	BENDIX® R-12™ 102802	R-12™ REPAIR KIT



WA#	REPLACES	DESCRIPTION
<b>WA103028</b>	BENDIX® R-14™ 103028	Supply Port (1) 1/2" N.P.T. Delivery Ports (4) 1/2" N.P.T. Service Port (1) 1/4" N.P.T. Balance Port (1) 1/8" N.P.T. 4 psi Cracking Pressure

### RELAY VALVE REPAIR KIT



WA#	REPLACES	DESCRIPTION
<b>WA102802A</b>	BENDIX® R-14™ 102802A	R-14™ REPAIR KIT



## HORIZONTAL RELAY VALVES, RELAY VALVE REPAIR KITS

### HORIZONTAL RELAY VALVES & RELATED REPAIR KITS



WA#	REPLACES	DESCRIPTION
<b>WA103009</b>	BENDIX® R-12H™ 103009 Horizontal	Supply Port (2) 3/4" N.P.T. Delivery Ports (2) 1/2" N.P.T. Service Port (1) 1/4" N.P.T. CRACKING PRESSURE: 4 psi

#### RELAY VALVE REPAIR KIT



WA#	REPLACES	DESCRIPTION
<b>WA102802</b>	BENDIX® R-12H™ FOR WA103009	R-12H REPAIR KIT



WA#	REPLACES	DESCRIPTION
<b>WA103010</b>	BENDIX® R-14H™ 103010 HORIZONTAL	Supply Port (2) 3/4" N.P.T. Delivery Ports (2) 1/2" N.P.T. Service Port (1) 1/4" N.P.T. Balance Port (1) 1/8" N.P.T. 4 psi Cracking Pressure

#### RELAY VALVE REPAIR KIT



WA#	REPLACES	DESCRIPTION
<b>WA102802A</b>	BENDIX® R-14H™ 102802A	R-14H™ REPAIR KIT

**WWW.WORLDAMERICAN.COM**  
YOUR #1 SOURCE FOR HEAVY DUTY AFTERMARKET COMPONENTS.

# FOOT VALVES & REPAIR KITS

## FOOT VALVE & RELATED REPAIR KITS



WA#	REPLACES	DESCRIPTION
<b>WA277863</b>	MIDLAND® KN22100 BENDIX® E-3™ 277863	FOOT VALVE SUPPLY PORTS: (2) 1/2" N.P.T. AUX SUPPLY PORTS: (2) 1/4" N.P.T. DELIVERY PORTS: (4) 1/2" N.P.T.

## FOOT VALVE REPAIR KIT



WA#	REPLACES	DESCRIPTION
<b>WA289329</b>	BENDIX® E-3™ 289329	E-3™ REPAIR KIT



WA#	REPLACES	DESCRIPTION
<b>WA286171</b>	MIDLAND® KN22140 MIDLAND® KN22150 BENDIX® E-6™ 286171	FOOT VALVE SUPPLY PORTS: (4) 3/8" N.P.T. DELIVERY PORTS (4) 3/8" N.P.T.
<b>WA287368</b>	BENDIX® E-6™ 287368	MINOR KIT
<b>WA289335</b>	BENDIX® E-6™ 289335	MAJOR KIT



WA#	REPLACES	DESCRIPTION
<b>WA288383</b>	BENDIX® E-7™ 288383, 101818	EXHAUST PORTS CONTAINS DIAPHRAGM DUAL CIRCUIT VALVE

## BASIC FOOT VALVES, FOOT VALVE TREADLE ASSY.

### BASIC FOOT VALVE



WA#	REPLACES	DESCRIPTION
<b>WA800629</b>	BENDIX® E-8P™ 800629, 065313, 800583	DUAL CIRCUIT VALVE LOWER BODY ROTATED REPLACES 065313, 800583



WA#	REPLACES	DESCRIPTION
<b>WA284760</b>	BENDIX® E-7™ 284760	Firewall Mtd. (Ford) Dual Circuit Valve

### FOOT VALVE TREADLE ASSY.



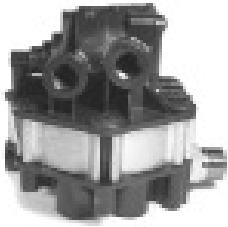
WA#	REPLACES	DESCRIPTION
<b>WASN4017A</b>	BENDIX® 275747 MIDLAND® SN4017A	PEDAL ANGLE: 45° INCLUDES: MOUNTING BRACKET & TREADLE ASSY.



**WWW.WORLDAMERICAN.COM**

**YOUR #1 SOURCE FOR HEAVY DUTY AFTERMARKET COMPONENTS.**

**FULL FUNCTION TRAILER VALVE**



WA#	REPLACES	DESCRIPTION
<b>KN28600</b>	MIDLAND® KN28600 STYLE FF-2, GENUINE ONLY	SUPPLY PORTS: (1) 3/8" N.P.T. CONTROL PORTS: (1) 1/4" N.P.T. RESERVOIR PORTS: (1) 3/4" N.P.T. SERVICE BREAK PORTS: (4) 3/8" N.P.T. SPRINGBRAKE PORTS: (2) 3/8" N.P.T. CRACKING PRESSURE: 3 psi.
<b>KN28601</b>	MIDLAND® KN28601 FF-2 STYLE, GENUINE ONLY	RESERVOIR PORTS: (1) 1/2" NPT



WA#	REPLACES	DESCRIPTION
<b>KN28600X</b>	KN28600X MIDLAND® FF-2	<u>REBUILT. NO CORE CHARGE</u> SUPPLY PORT (1) 3/8 N.P.T. CONTROL PORT (1) 1/4 N.P.T. RESEVOIR PORT (1) 3/4 N.P.T. SERVICE BRAKE PORTS (4) 3/8 N.P.T. SPRING BRAKES PORTS (2) 3/8 N.P.T. CRACK PRESSURE: 3 psi



WA#	REPLACES	DESCRIPTION
<b>KN28601X</b>	KN28601X MIDLAND® FF-2	REBUILT. NO CORE CHARGE SUPPLY PORT (1) 3/8 N.P.T. CONTROL PORT (1) 1/4 N.P.T. RESEVOIR PORT (1) 1/2 N.P.T. SERVICE BRAKE PORTS (4) 3/8 N.P.T. SPRING BREAK PORTS (2) 3/8 N.P.T. CRACK PRESSURE: 3 psi

**RT-4 STYLE MULTIFUNCTION TRAILER VALVE**



WA#	REPLACES	DESCRIPTION
<b>WAKN26000</b>	MIDLAND® KN26000 SEALCO® 110191	SUPPLY PORTS: (2) 3/8" N.P.T. DELIVERY PORTS: (4) 3/8" N.P.T. CONTROL PORTS: (1) 3/8" N.P.T. RESERVOIR PORTS: (1) 1/2" N.P.T. RESERVOIR PORTS: (1) 3/8" N.P.T. CLOSING PRESSURE: 55 psi.

**TRAILER CONTROL VALVE**



WA#	REPLACES	DESCRIPTION
<b>WAKN20541</b>	MIDLAND® KN20541 IHC® 476356C92	ALL PORTS: 1/4" N.P.T. IN-COLUMN MOUNT

**WWW.WORLDAMERICAN.COM**



# SPRINGBRAKE STYLE VALVE AND REPAIR KITS, SPRINGBREAK CONTROL VALVES

## SPRINGBRAKE STYLE VALVE



WA#	REPLACES	DESCRIPTION
<b>WA286364</b>	BENDIX® SR-1™ 286364	All Ports 1/4" N.P.T. Back mounted 90-95 psi Limiting Pressure



## SPRINGBRAKE STYLE VALVE REPAIR KITS

WA#	REPLACES	DESCRIPTION
<b>WA287072</b>	BENDIX® SR-1™ 287072	SR-1™ Repair Kit

## SPRINGBRAKE CONTROL VALVES



WA#	REPLACES	DESCRIPTION
<b>WA287376</b>	BENDIX® SR-2™ 287376	Supply, Trailer Port (1) 1/4" N.P.T. Delivery Ports (4) 3/8" N.P.T. Reservoir Ports (2) 1/4" N.P.T. Reservoir Port (1) 3/4" N.P.T. Exhaust Port (1) 3/8" N.P.T.
<b>WA103061</b>	BENDIX® SR-2™ 103061	1/2" NPT S.B. Res. Port



WA#	REPLACES	DESCRIPTION
<b>WA102761</b>	BENDIX® SR-2™ 102761	1/2" NPT S.B. Res. Port 3/4" NPT S.B. Res. Port



WA#	REPLACES	DESCRIPTION
<b>WA101622</b>	BENDIX® SR-4™ 101622	Supply, Trailer Port (1) 1/4" N.P.T. Service, Trailer Port (1) 1/4" N.P.T. Delivery Ports (4) 3/8" N.P.T. Reservoir Port (1) 1/2" N.P.T. Reservoir Port (2) 1/4" N.P.T. Exhaust Port (1) 3/8" N.P.T.



WA#	REPLACES	DESCRIPTION
<b>WA101112</b>	BENDIX® SR-4™ 101112	Supply, Trailer Port (1) 1/4" N.P.T. Service, Trailer Port (1) 1/4" N.P.T. Delivery Ports (4) 3/8" N.P.T. Reservoir Port (1) 3/4" N.P.T. Reservoir Port (2) 1/4" N.P.T. Exhaust Port (1) 3/8" N.P.T.



WA110170

WA	REPLACES	DESCRIPTION
<b>WA110170</b>	SEALCO® 110170	PORT (A) 1/2 N.P.T. / PORT (B) 1/2 N.P.T.
<b>WA110171</b>	SEALCO® 110171	PORT (A) 1/2 N.P.T. / PORT (B) 3/8 N.P.T.
<b>WA110191</b>	SEALCO® 110191	PORT (A) 3/8 N.P.T. / PORT (B) 1/2 N.P.T.
<b>WA110310</b>	SEALCO® 110310	PORT (A) 3/8 N.P.T. / PORT (B) 1/2 N.P.T.
<b>WA110315</b>	SEALCO® 110315	PORT (A) 1/2 N.P.T. / PORT (B) 3/8 N.P.T.

# SPRINGBRAKE STYLE VALVES & SAFETY VALVES

## SPRINGBRAKE STYLE VALVES



WA#	REPLACES	DESCRIPTION
<b>WA65437</b>	BENDIX® SR-5™ 065437	Springbrake Valve 3/4" NPT. S.B. Res. Port



WA#	REPLACES	DESCRIPTION
<b>WA65439</b>	BENDIX® SR-5™ 065439	Delivery Ports (4) 3/8" N.P.T. Service, Trailer Port 1/4" N.P.T. Trailer Supply 1/4" N.P.T. P.T. Service 1/4" N.P.T. 3/4" Reservoir Mounting With Anti-Compounding

## SAFETY VALVES



WA#	REPLACES	DESCRIPTION
<b>WA284142</b>	MIDLAND® KN31400/KN31200 BENDIX® ST-3™ 284142	150 psi Cracking Pressure



WA#	REPLACES	DESCRIPTION
<b>WAKN31400</b>	MIDLAND® KN31400/KN31200 BENDIX® ST-3™ 284142	1/4" N.P.T. 150 psi Cracking Pressure



WA#	REPLACES	DESCRIPTION
<b>WA205105</b>	BENDIX® 205105	150 psi Cracking Pressure



WA#	REPLACES	DESCRIPTION
<b>WA285849</b>	BENDIX® ST-3™	POP OFF VALVE CRACKING PRESSURE: 175 psi

## TRACTOR PROTECTION VALVES & CLAMPED SPRINGBRAKES

### TRACTOR PROTECTION VALVE



WA#	REPLACES	DESCRIPTION
<b>WA279000</b>	BENDIX® TP-3™ 279000	Service Tractor Port (1) 3/8" N.P.T. Service, Trailer Port (1) 1/2" N.P.T. Emerg. Tractor Port (1) 1/4" N.P.T. Emerg. Trailer Port (1) 1/2" N.P.T.

### TRACTOR PROTECTION VALVE REPAIR KIT



WA#	REPLACES	DESCRIPTION
<b>WA280858</b>	BENDIX® TP-3™ 280858	TP-3 REPAIR KIT



WA#	REPLACES	DESCRIPTION
<b>WA288605</b>	BENDIX® TP-5™ 288605	TRACTOR PROTECTION REPLACES CONTROL VALVE MANIFOLD

### CLAMPED SPRINGBRAKE STYLE 24/24



WA#	REPLACES	DESCRIPTION
<b>WA2424TC</b>	MGM® MA15441	TYPE 24 SPRINGBRAKE W/CLEVIS CLAMPED

### CLAMPED SPRINGBRAKE STYLE 30/30T



WA#	REPLACES	DESCRIPTION
<b>WA3030TC</b>	MGM® MA15431	30/30 Tandem Clamped Springbrake W/Clevis

## FORGED YOKE KIT (CLEVIS KIT)

### FORGED YOKE KIT (CLEVIS KIT)



WA#	REPLACES	DESCRIPTION
<b>WAKN36470</b>	MIDLAND® KN36470	1/2" Pin, 5/8" Thread Clevis Assy. Forged Steel Assembly with Zinc and Yellow Dichromate Plating. Includes Yoke, Clevis, Pin and Cotter Pin - Used with Air Chamber Type 20, 24 and 30.



# CLEVIS, SPRING, SPRINGBRAKE STYLE DIAPHRAGMS

## CLEVIS



WA#	REPLACES	DESCRIPTION
WA30CL	MIDLAND® KN36470	Clevis 3030T Style Spring W/ 1/2" Cotter Pin

## SPRING



WA#	REPLACES	DESCRIPTION
WA30PS	N/A	3030T Style Spring

## SPRINGBRAKE STYLE DIAPHRAGMS



WA#	REPLACES	DESCRIPTION
WAKN18090	MIDLAND® KN18090 BENDIX® 234433	TYPE 9 STYLE - 5" AIR BRAKE DIAPHRAGM



WA#	REPLACES	DESCRIPTION
WAKN18120	MIDLAND® KN18120 BENDIX® 234226	TYPE 12 STYLE - 5-1/2" AIR BRAKE DIAPHRAGM



WA#	REPLACES	DESCRIPTION
WAKN18160	MIDLAND® KN18160 BENDIX® 234189	TYPE 16 STYLE - 6" AIR BRAKE DIAPHRAGM



WA#	REPLACES	DESCRIPTION
WAKN18200	MIDLAND® KN18200 BENDIX® 234099	TYPE 20 STYLE - 6 1/2" AIR BRAKE DIAPHRAGM



WA#	REPLACES	DESCRIPTION
WAKN18240	MIDLAND® KN18240 BENDIX® 234100	TYPE 24 STYLE - 7" AIR BRAKE DIAPHRAGM



WA#	REPLACES	DESCRIPTION
WAKN18300	MIDLAND® KN18300 BENDIX® 234101	TYPE 30 STYLE - 8" AIR BRAKE DIAPHRAGM

## PIGGY BACK KIT, SERVICE BRAKE CHAMBERS

### PIGGYBACK KIT



WA#	DESCRIPTION
WA3030PBKIT	30/30 Style-Contains the 3030 PiggybackClamp Band, Diaphragm, Small Spring and Washer

### SERVICE BRAKE CHAMBERS



WA#	REPLACES	DESCRIPTION
WA30SC	MIDLAND® KN36300 CHAMBER W/CLEVIS	TYPE 30 STYLE SERVICE BRAKE CHAMBER W/CLEVIS



WA#	REPLACES	DESCRIPTION
WA12SC	MIDLAND® KN36012	TYPE 12 STYLE SERVICE BRAKE CHAMBER W/CLEVIS



WA#	REPLACES	DESCRIPTION
WA16SC	MIDLAND® KN36016	TYPE 16 STYLE SERVICE BRAKE CHAMBER W/CLEVIS



WA#	REPLACES	DESCRIPTION
WA20SC	MIDLAND® KN36200	TYPE 20 STYLE SERVICE BRAKE CHAMBER W/CLEVIS



WA#	REPLACES	DESCRIPTION
WA24SC	MIDLAND® KN36240	TYPE 24 STYLE SERVICE BRAKE CHAMBER W/CLEVIS

## DASH CONTROL VALVE & DASH VALVES

### DASH CONTROL VALVE



WA#	REPLACES	DESCRIPTION
<b>WA106113</b>	BENDIX® PP-7™ 106113, 288241	DASH CONTROL VALVE 5/16" DIA SHAFT

### DASH VALVE



WA#	REPLACES	DESCRIPTION
<b>WAKN20615</b>	MIDLAND® KN20615	DASH VALVE 1-PC CONSTRUCTION 1/4" MOUNTING HOLES (4) W/NO THREADS



WA#	REPLACES	DESCRIPTION
<b>WA65157</b>	BENDIX® MV-3™ 5001230 / 065157 800516	DASH CONTROL VALVE COMBINATION PP-1™ & PP-7™ REBUILT BENDIX®



## PUSH/PULL TYPE VALVES & REPAIR KITS

### PUSH/PULL TYPE VALVES



WA#	REPLACES	DESCRIPTION
<b>WA276566</b>	BENDIX® PP-1™ 276566 MIDLAND® KN20021	Supply Port (1) 1/8" N.P.T. Delivery Ports (2) 1/8" N.P.T. Exhaust Port (1) 1/8" N.P.T. 20 psi Release



WA#	REPLACES	DESCRIPTION
<b>WA281587</b>	BENDIX® PP-1™ 281587 279786	Supply Port (1) 1/8" N.P.T. Delivery Ports (2) 1/8" N. P.T. Exhaust Port (1) 1/8" N.P.T. 40 psi Release



WA#	REPLACES	DESCRIPTION
<b>WA276567</b>	MIDLAND® KN20021 BENDIX® PP-1™ 276567 275175	Supply Port (1) 1/8" N.P.T. Delivery Ports (2) 1/8" N.P.T. Exhaust Port (1) 1/8" N.P.T. 40 psi Release

### PUSH/PULL TYPE VALVE REPAIR KIT



WA#	REPLACES	DESCRIPTION
<b>WA281126</b>	BENDIX® PP-1™	PP-1™ REPAIR KIT 281126



WA#	REPLACES	DESCRIPTION
<b>WA276462</b>	BENDIX® PP-2™ 276462 2752550 40 psi Release	Supply Port (1) 1/8" N.P.T. Delivery Ports (2) 1/8" N.P.T. Brake Valve Port (1) 1/8" N.P.T.

### PUSH/PULL TYPE VALVE REPAIR KIT



WA#	REPLACES	DESCRIPTION
<b>WA281127</b>	BENDIX® PP-2™ 281127	PP-2™ REPAIR KIT



## PUSH/PULL TYPE VALVES & REPAIR KITS

### PUSH/PULL TPYE VALVE



WA#	REPLACES	DESCRIPTION
<b>WA288746</b>	BENDIX® PP-3™ 288746	Supply Port (1) 1/8" N.P.T. Delivery Port (1) 1/4" N.P.T. Exhaust Port (1) 1/4" N.P.T. With Automatic Tripper



WA#	REPLACES	DESCRIPTION
<b>WA279787</b>	BENDIX® PP-3™ 279787	Supply Port (1) 1/8" N.P.T. Delivery Port (1) 1/4" N.P.T. Exhaust Port (1) 1/4" N.P.T. With Automatic Tripper (Female)



WA#	REPLACES	DESCRIPTION
<b>WA288239</b>	BENDIX® PP-T™ 288239 288721	SUPPLY PORTS: (1) 1/8" N.P.T. DELIVERY PORTS: (1) 1/8" N.P.T. CONTROL PORTS: (1) 1/8" N.P.T. 40 psi RELEASE



WA#	REPLACES	DESCRIPTION
<b>WA288241</b>	BENDIX® PP-7™ 288241 106113 MIDLAND® KN20025	SUPPLY PORTS: (1) 1/8" N.P.T. DELIVERY PORTS: (1) 1/4 N.P.T. CONTROL PORTS: (1) 1/8" N.P.T. EXHAUST PORTS: (1) 1/4" N.P.T. 40 psi RELEASE



### PUSH/PULL VALVE REPAIR KIT

WA#	REPLACES	DESCRIPTION
<b>WA287367</b>	BENDIX® PP-7™ 287367	PP-7™ REPAIR KIT

**WWW.WORLDAMERICAN.COM**  
YOUR #1 SOURCE FOR AFTERMARKET HEAVY DUTY PARTS!

# PUSH/PULL TYPE VALVES, REPAIR KIT & PUSH/PULL TYPE KNOBS

## PUSH/PULL TYPE VALVE



WA#	REPLACES	DESCRIPTION
<b>WA287238</b>	MIDLAND® KN20035 BENDIX® PP-8™ 287238	Supply Port (1) 1/8" N.P.T. Delivery Ports (2) 1/8 N.P.T. Exhaust Port (1) 1/8" N.P.T. 20 psi Release



WA	REPLACES	DESCRIPTION
<b>WAKN20031</b>	MIDLAND® KN20030, KN20031	ALL PORTS 1/4" N.P.T., 25-35 psi



WA	REPLACES	DESCRIPTION
<b>WAKN20033</b>	MIDLAND® KN20033	ALL PORTS 1/4" N.P.T., 7-17 psi



## PUSH/PULL TYPE KNOB



WA#	REPLACES	DESCRIPTION
<b>WA248433</b>	BENDIX® PP-1™ 248433 MIDLAND® KN20901	YELLOW W/PIN 3/8" SHAFT



WA#	REPLACES	DESCRIPTION
<b>WA290655</b>	BENDIX® PP-1™ 290655 MIDLAND® KN20900	RED W/PIN 3/8" SHAFT

# CONTROL VALVES, COUNTERSHAFT BRAKE VALVE & TRANSMISSION VALVES

## CONTROL VALVES



WA#	REPLACES	DESCRIPTION
<b>WA229635</b>	MIDLAND® KN20001 BENDIX® TW-1™ 229635 229617	Supply Port (1) 1/8" N.P.T. Delivery Ports (2) 1/8" N.P.T. INCLUDES FLIP HANDLE



WA#	REPLACES	DESCRIPTION
<b>14651R</b>	EATON® / FULLER® 14651	Supply Port (1) 1/8" N.P.T. Delivery Ports (2) 1/8" N.P.T.

## COUNTERSHAFT BRAKE VALVE



WA#	REPLACES	DESCRIPTION
<b>16859</b>	EATON® / FULLER® 16859	All Ports 1/8" N.P.T.

## TRANSMISSION VALVE



WA#	REPLACES	DESCRIPTION
<b>A3546</b>	EATON® / FULLER® A-3546	Inlet Port (1) 1/8" N.P.T. Outlet Port (1) 1/8" N.P.T.



WA#	REPLACES	DESCRIPTION
<b>19974</b>	EATON® / FULLER® 19974	Direct Replacement for 15512

**WWW.WORLDAMERICAN.COM**  
YOUR #1 SOURCE FOR AFTERMARKET HEAVY DUTY PARTS!

# AIR SHIFT VALVE & REPAIR KIT, TRANSMISSION SPLITTER VALVE AND SELECTORS

## AIR SHIFT VALVE



WA#	REPLACES	DESCRIPTION
<b>A4041R</b>	EATON®/ FULLER® A4041	INLET PORTS: (1) 1/4" N.P.T. OUTLET PORTS: (1) 1/4" N.P.T.



## AIR SHIFT VALVE REPAIR KIT

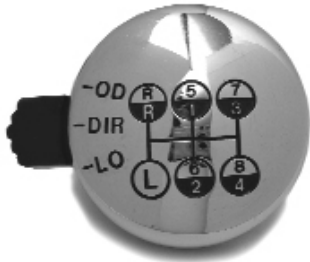
WA#	REPLACES	DESCRIPTION
<b>K1486R</b>	EATON®/ FULLER®	REPAIR KIT FOR SLAVE VALVE K1486

## TRANS SPLITTER VALVE



WA	REPLACES	DESCRIPTION
<b>K3331</b>	EATON®/FULLER® K3331	TRANS. SPLITTER VALVE, SUPER-10

## SELECTORS



WA#	REPLACES	DESCRIPTION
<b>A4487</b>	EATON®/FULLER® A4487	ALL PORTS: 1/16" N.P.T. 3 POSITION SELECTOR



WA#	REPLACES	DESCRIPTION
<b>A4490</b>	EATON®/FULLER® A4490	ALL PORTS: 1/16" N.P.T. 3 POSITION SELECTOR



WA#	REPLACES	DESCRIPTION
<b>A4491</b>	EATON®/FULLER® A4491	ALL PORTS: 1/16" N.P.T. 2 POSITION SELECTOR

**EATON® / FULLER® ERGONOMIC STYLE TRANSMISSION AIR SHAFT VALVES & REPAIR KIT**

**EATON®/FULLER® ERGONOMIC TRANSMISSION AIR SHIFT VALVES**



WA#	REPLACES	DESCRIPTION
<b>A6913R</b>	EATON/ FULLER® A6913 (NEW STYLE) A4900 (OLD STYLE)	All Ports 1/16" N.P.T. w/WA Logo Medallion



WA#	REPLACES	DESCRIPTION
<b>A6909R</b>	EATON/ FULLER® A6909 (NEW STYLE) A5010 (OLD STYLE)	All Ports 1/16" N.P.T. w/WA Logo Medallion



WA#	REPLACES	DESCRIPTION
<b>A6915R</b>	EATON/ FULLER® A6915 (NEW STYLE) A5015 (OLD STYLE)	All Ports 1/16" N.P.T. w/WA Logo Medallion



WA#	REPLACES	DESCRIPTION
<b>A6918R</b>	EATON/ FULLER® A6918 (NEW STYLE)	All Ports 1/16" N.P.T. w/WA Logo Medallion

**REPAIR KIT**



WA#	REPLACES	DESCRIPTION
<b>K1826</b>	K1826	FULLER® KIT



# AIR SHIFT VALVE, SLAVE VALVE REPAIR KIT, FILTER ASSEMBLY AND MERITOR®/ROCKWELL® STYLE SLAVE VALVE

## AIR SHIFT VALVE



WA#	REPLACES	DESCRIPTION
<b>A5000</b>	EATON®/ FULLER® A5000 EXPORT ONLY	Supply Ports (2) 1/8" N.P.T. Delivery Port (3) 1/8" N.P.T. Control Port (1) 1/8" N.P.T.

## SLAVE VALVE REPAIR KIT



WA#	REPLACES	DESCRIPTION
<b>K1935R</b>	EATON®/ FULLER® K1935	Repair Kit for A5000/K2424

## FILTER ASSEMBLY



WA#	REPLACES	DESCRIPTION
<b>A4740</b>	EATON®/ FULLER® A4740	Supply Port (1) 3/8" N.P.T. Delivery Ports (3) 1/8" N.P.T. 55-65 psi

## MERITOR® / ROCKWELL® STYLE SLAVE VALVE



WA#	REPLACES	DESCRIPTION
<b>KIT 5385</b>	MERITOR® / ROCKWELL® KIT 5385	Fits Meritor® Transmission 9 & 10 Speeds

**WWW.WORLDAMERICAN.COM**  
**YOUR #1 SOURCE FOR AFTERMARKET HEAVY DUTY PARTS!**

# MERITOR® STYLE TRANSMISSIONS 9-10 SPEED AIR REGULATOR & SOLENOID VALVES

## MERITOR® STYLE TRANSMISSIONS 9-10 SPEED AIR REGULATOR



WA#	REPLACES	DESCRIPTION
<b>A3280X9072</b>	MERITOR® / ROCKWELL® A-3280-X-9072	Air Regulator Assembly Supply Port (1) - 3/8 N.P.T. Delivery Ports (3) 1/8 N.P.T. 55-70 psi

## SOLENOID VALVES



WA#	REPLACES	DESCRIPTION
<b>WAKN68237</b>	MIDLAND® KN68237	24 Volt Supply Port (1) 1/4" N.P.T. Delivery Port (1) 1/4" N.P.T.



WA#	REPLACES	DESCRIPTION
<b>288905C91</b>	MIDLAND® KN68230 EATON® 46805	12 Volt Supply Port (1) 1/4" N.P.T. Delivery Port (1) 1/4" N.P.T.



WA#	REPLACES	DESCRIPTION
<b>WA6997312</b>	CUMMINS® 3035342 CUMMINS® BM-6997312	12 Volt



WA#	REPLACES	DESCRIPTION
<b>WA6997324</b>	CUMMINS® 3035344 CUMMINS® BM-69973-24	24 Volt

# PRESSURE REGULATOR, FILTER REGULATOR KIT, VALVE INSERTS & BREATHER

## PRESSURE REGULATOR



WA#	REPLACES	DESCRIPTION
<b>16743</b>	EATON® / FULLER® 16743	SUPPLY PORTS: (1) 1/4" N.P.T. DELIVERY PORTS: (1) 1/8" N.P.T. 55-65 psi

## FILTER REGULATOR KIT



WA#	REPLACES	DESCRIPTION
<b>K2170</b>	EATON® / FULLER® K-2170	ALL PORTS: 1/8" NPT NON-ADJUSTABLE PRESET AT: 57-65 psi

## VALVE INSERTS



WA#	REPLACES	DESCRIPTION
<b>4300810</b>	EATON® / FULLER® 4300810	VALVE INSERT (NEW STYLE)

## BREATHER



WA#	REPLACES	DESCRIPTION
<b>4304602</b>	EATON® / FULLER® 4304602/23605	BREATHER (TRANSMISSION) OLD# 23605



## LOW PRESSURE SWITCH, STOPLIGHT SWITCH & AIR HORNS

### LOW PRESSURE SWITCH

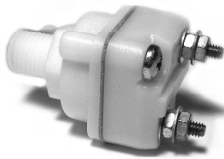


WA#	REPLACES	DESCRIPTION
<b>WA228750</b>	BENDIX® LP-3™ 228750	DOUBLE TERMINAL 1/4" N.P.T. NORMALLY CLOSED (0 psi) OPENS AT: 60 psi



WA#	REPLACES	DESCRIPTION
<b>WA279416</b>	BENDIX® LP-3™ 279416	SINGLE TERMINAL 1/4" N.P.T. NORMALLY OPEN (0 psi) CLOSES AT: 60 psi

### STOPLIGHT SWITCH



WA#	REPLACES	DESCRIPTION
<b>WA228600</b>	BENDIX® SL-4™ 228600	1/4" N.P.T. NORMALLY OPEN (0 psi) CLOSES AT: 5 psi

### AIR HORNS



WA#	REPLACES	DESCRIPTION
<b>WA00978</b>	HADLEY® H00978	24" OVERALL LENGTH: 7/16" 24 STRAIGHT FEMALE PORT

**WWW.WORLDAMERICAN.COM**  
YOUR #1 SOURCE FOR HEAVY DUTY AFTERMARKET COMPONENTS.

## AIR HORNS (cont.) & AIR HORN VALVE

### AIR HORNS



WA#	REPLACES	DESCRIPTION
<b>WA2022</b>	GROVER® 2022	24" Overall Length 1/8" Pipe Port



WA#	REPLACES	DESCRIPTION
<b>WAL1024</b>	GROVER® AL-1024	24" Overall Length 1/8" Pipe Port



WA#	REPLACES	DESCRIPTION
<b>WA1600</b>	GROVER® 1600	15" Overall Length 1/8" Pipe Port

### AIR HORN VALVE



WA#	REPLACES	DESCRIPTION
<b>WA228928</b>	BENDIX® HV-3™ 228928	Valve, Air Control Cab Mount



## QUICK RELEASE VALVES

### QUICK RELEASE VALVES



WA#	REPLACES	DESCRIPTION
<b>WA229859</b>	MIDLAND® KN32005 BENDIX® QR-1™ 229859, 288251	SUPPLY PORTS: (1) 3/8" N.P.T. DELIVERY PORTS: (2) 3/8" N.P.T.



WA#	REPLACES	DESCRIPTION
<b>WA229860</b>	MIDLAND® KN32011 BENDIX® QR-1™ 229860	SUPPLY PORTS: (1) 1/2" N.P.T. DELIVERY PORTS: (2) 3/8" N.P.T.



WA#	REPLACES	DESCRIPTION
<b>WA289714</b>	BENDIX® QR-1C™ 289714 MIDLAND® KN32041	SUPPLY PORTS: (1) 1/4" N.P.T. DELIVERY PORTS: (2) 3/8" N.P.T. BALANCE: (1) 1/4" N.P.T.



WA#	REPLACES	DESCRIPTION
<b>WA289182</b>	BENDIX® QR-1C™ 289182	SUPPLY PORTS: (1) 1/4" N.P.T. DELIVERY PORTS: (2) 3/8" N.P.T. BALANCE: 1/4" N.P.T.



WA#	REPLACES	DESCRIPTION
<b>WA229813</b>	BENDIX® QR-1C™ 229813	SUPPLY PORTS: (1) 3/8" N.P.T. DELIVERY PORTS: (1) 1/4" N.P.T.

# QUICK RELEASE & LIMITING VALVES & FRONT AXLE RATIO VALVE

## QUICK RELEASE & LIMITING VALVES



WA#	REPLACES	DESCRIPTION
<b>WA229505</b>	BENDIX® LQ-2™ 229505 MIDLAND® KN32030	SUPPLY PORTS: 3/8" N.P.T. DELIVERY PORTS: 3/8" N.P.T.



WA#	REPLACES	DESCRIPTION
<b>WA229507</b>	BENDIX® LQ-2™ 229507	SUPPLY PORTS: 1/2" N.P.T. DELIVERY PORTS: 1/4" N.P.T.



WA#	REPLACES	DESCRIPTION
<b>WA229509</b>	BENDIX® LQ-2™ 229509	SUPPLY PORTS: 3/8" N.P.T. DELIVERY PORTS: 1/4" N.P.T. EXHAUST PORTS: 3/8" N.P.T.

## FRONT AXLE RATIO VALVE



WA#	REPLACES	DESCRIPTION
<b>WA289144</b>	BENDIX® LQ-4™ 289144	SUPPLY PORTS: (1) 3/8" N.P.T. DELIVERY PORTS: (1) 3/8" N.P.T. EQUALIZING PRESSURE: 60 psi



# CHECK VALVES

## CHECK VALVES



WA#	REPLACES	DESCRIPTION
<b>WAKN23010</b>	MIDLAND® KN23010 BENDIX® SC-1™ 227870	Male Port (1) 3/8" N.P.T. Female Port (1) 3/8" N.P.T.



WA#	REPLACES	DESCRIPTION
<b>WAKN23000</b>	MIDLAND® KN23000 BENDIX® SC-1™ 227788, 227781, 227717	Male Port (1) 1/2" N.P.T. Female Port (1) 1/2" N.P.T.



WA#	REPLACES	DESCRIPTION
<b>WAKN23040</b>	MIDLAND® KN23040 SC-1™	Male Port (1) 3/4" N.P.T. Female Port (1) 3/4" N.P.T.



WA#	REPLACES	DESCRIPTION
<b>WA227870</b> (USE WAKN23010)	BENDIX® SC-3™ 227870 MIDLAND® KN23010	Male Port (1) 3/8" N.P.T. Female Port (1) 3/8" N.P.T.



WA#	REPLACES	DESCRIPTION
<b>WA227871</b> (USE WAKN23000)	BENDIX® SC-3™ 227871, 227788, 227781 227717 MIDLAND® KN23000	Male Port (1) 1/2" N.P.T. Female Port (1) 1/2" N.P.T.

## CHECK VALVES (CONT.)

### CHECK VALVES (cont.)



WA#	REPLACES	DESCRIPTION
<b>WA801144</b>	BENDIX® SC-3™ 801144	SUPPLY PORTS: (2) 3/4" N.P.T. DELIVERY PORTS: (2) 1/2" N.P.T. (2) 1/4" N.P.T. SERVICE PORTS: (1) 3/8" N.P.T. OVERALL LENGTH: 4 11/16"



WA#	REPLACES	DESCRIPTION
<b>WA800370</b>	BENDIX® SC-3™ 800370	90% MALE/FEMALE, BRASS INLET (A): 1/2" N.P.T. INLET (B): 1/2" N.P.T. FEMALE INLET MALE OUTLET



WA#	REPLACES	DESCRIPTION
<b>WA800369</b>	BENDIX® SC-3™ 800369	INLET (A) 3/4" N.P.T. INLET (B) 3/4" N.P.T. FEMALE INLET FEMALE OUTLET



WA#	REPLACES	DESCRIPTION
<b>WA800376</b>	MIDLAND® KN23060 BENDIX® SC-3™ 800376	90% MALE/FEMALE INLET (A) 3/4" N.P.T. INLET (B) 3/4" N.P.T. FEMALE INLET MALE OUTLET



# PRESSURE RELEASE VALVE, DOUBLE CHECK VALVE, & HEIGHT CONTROL & LEVELING VALVES

## PRESSURE RELEASE VALVE



WA#	REPLACES	DESCRIPTION
<b>WA800350-175</b>	MIDLAND® KN25080 BENDIX® 800350-175	ALL PORTS: 3/8" N.P.T. SPECIFICALLY DESIGNED FOR AIR DRYER APPLICATIONS <i>THE EXACT REPLACEMENT FOR THE O.E.M. PART NUMBER.</i> LOW PROFILE - 175 psi AVAILABLE ST-4

## DOUBLE CHECK VALVE



WA#	REPLACES	DESCRIPTION
<b>WA278614</b>	MIDLAND® KN25080 BENDIX® DC-4™ 278614	ALL PORTS 3/8" N.P.T.

## HEIGHT CONTROL AND LEVELING VALVES



WA#	REPLACES	DESCRIPTION
<b>WA90054007</b>	NEWAY® 90054007	Height Control Valve All Ports 1/8" NPT Includes Fittings 6 second delay



WA	REPLACES	DESCRIPTION
<b>WAH00450CE</b>	HADLEY® H00450CE, H00450CR IHC® 574696C91, 1670556C91	ALL PORTS 1/8" N.P.T. LEVELLING VALVE, COMPLETE



WA	REPLACES	DESCRIPTION
<b>WAKN27000M</b>	MIDLAND® KN27000	HEIGHT CONTROL VALVE, 4 SECOND DELAY, METAL BODY

# AIR SHIFT VALVE, PILOT VALVE, PRESSURE PROTECTION VALVE AND AIR REGULATING VALVE

## AIR SHIFT VALVE



WA#	REPLACES	DESCRIPTION
<b>WAKN27000</b>	MIDLAND® KN27000	HEIGHT CONTROL VALVE ALL PORTS 1/4" 4 SECOND DELAY
<b>WAKN27000A</b>		LINAGE ONLY

## PILOT VALVE



WA#	REPLACES	DESCRIPTION
<b>WA9054079</b>	NEWAY® 9054079	Pilot Valve 3-Way

## PRESSURE PROTECTION VALVE



WA#	REPLACES	DESCRIPTION
<b>WA9054107</b>	NEWAY® 9054107 WILLIAMS® 118181 MIDLAND® KN31000 CHELSEA® 378414	PRESSURE PROTECTION VALVE



WA#	REPLACES	DESCRIPTION
<b>WAKN31000</b>	MIDLAND® KN31000	INLET PORT: 1/4" N.P.T. OUTLET PORT: 1/4" N.P.T. ACCESSORY PORT: B: 1/4" ACCESSORY PORT: C: 1/8"

## AIR REGULATING VALVE



WA#	REPLACES	DESCRIPTION
<b>WAKN31070</b>	MIDLAND® KN31070 BENDIX® 217380	ADJUSTABLE AIR REGULATING VALVE DELIVERY: 3/8" N.P.T. SUPPLY: 3/8" N.P.T. 10-125 psi OUTPUT



## TWIN PISTON BRAKE CALIPERS

### TWIN PISTON BRAKE CALIPERS



WA#	REPLACES	DESCRIPTION
<b>WA55250</b>	IHC®/NAVISTAR® 1658443C91 GMC® 15618891 BENDIX® 55250	Twin Piston Caliper 2.88" STEEL PISTON DESIGNED USED FRONT AND REAR



WA#	REPLACES	DESCRIPTION
<b>WA55251</b>	FORD® E6HG2B120B FORD® 5619099 BENDIX® 55251	TWIN PISTON CALIPER 2.50" DAYTON STYLE STEEL PISTON DESIGNED USED FRONT AND REAR



WA#	REPLACES	DESCRIPTION
<b>WA55252</b>	BENDIX® 55252	TWIN PISTON CALIPER 2.88" STEEL PISTON DESIGNED USED FRONT AND REAR



WA#	REPLACES	DESCRIPTION
<b>WA55314</b>	BENDIX® 55314	TEIN PISTON CALIPER 2.60" STEEL PISTON DESIGNED USED FRONT AND REAR



**WWW.WORLDAMERICAN.COM**  
YOUR #1 SOURCE FOR HEAVY FUTY AFTERMARKET COMPONENTS.

**EMERGENCY BRAKE SHOES, BRAKE SPRING STYLE  
FOR FMSI® # ENDING IN 2086, 2086DD, & BRAKE SPRING KIT**

**FMSI® EMERGENCY BRAKE SHOES**



WA#	REPLACES	DESCRIPTION
<b>WA2085</b>	ROCKWELL® A3-3722E421	EMERGENCY BRAKE SHOE INTERNAL TYPE, DRUM DIAMETER: 12" SIZE: 4" x 1/4" x 14 FITS ALLISON® AT540, MT640, MT650 LINED



WA#	REPLACES	DESCRIPTION
<b>WA2095</b>	FMSI® ENDING IN 2095	EMERGENCY BRAKE SHOE INTERNAL TYPE, DRUM DIAMETER: 9" SIZE: 2" x 3 1/6" x 10 1/2" FITS UPS® STYLE MODELS, LINED



WA#	REPLACES	DESCRIPTION
<b>WA1303</b>	FMSI® ENDING IN 1303	EMERGENCY BRAKE SHOE INTERNAL TYPE, DRUM DIAMETER: 10" SIZE: 3" x 3/16 x 11 1/4", LINED



WA#	REPLACES	DESCRIPTION
<b>WA2086</b>	FMSI® ENDING IN 2086	EMERGENCY BRAKE SHOE INTERNAL TYPE, DRUM DIAMETER: 9" SIZE: 3" x 3/16" FITS GM® & DODGE®



WA#	REPLACES	DESCRIPTION
<b>WA2086DD</b>	FMSI® ENDING IN 2086DD	EMERGENCY BRAKE SHOE INTERNAL TYPE, DRUM DIAMETER: 10" SIZE: 3" x 3/16" x 11 1/4" FITS FORD® & ZF®, LINED

**BRAKE SPRING FOR 2086, 2086DD STYLE**



WA#	DESCRIPTION
<b>B9TZ2A636A</b>	BRAKE SPRING FOR 2086 & 2086DD STYLES

**BRAKE SPRING KIT FOR 2086, 2086DD STYLE**



WA#	DESCRIPTION
<b>WA108687</b>	SPRING KIT FOR 2086 & 2086DD STYLES

## HYDRAULIC BRAKE DISK PADS

### HYDRAULIC DISC BRAKE PADS



WA#	REPLACES	DESCRIPTION
<b>WAD1084</b>	FMSI® # ENDING IN D184	HYDRAULIC DISC BRAKES, FOR 3.38 BENDIX® GRAPHITE - METALLIC



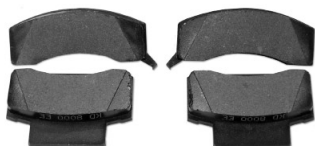
WA#	REPLACES	DESCRIPTION
<b>WAD224</b>	FMSI® # ENDING IN D224	HYDRAULIC DISC BRAKES, FOR 2.50 DAYTON® CALIPER GRAPHITE - METALLIC



WA#	REPLACES	DESCRIPTION
<b>WAD225</b>	FMSI® # ENDING IN D225	HYDRAULIC DISC BRAKES, FOR 2.88 BENDIX® CALIPER, GRAPHITE - METALLIC HAS SPECIAL BACKING PLATE RETENTION SYSTEM



WA#	REPLACES	DESCRIPTION
<b>WAD236</b>	FMSI® # ENDING IN D236	HYDRAULIC DISC BRAKES, FOR 2.88 DAYTON® CALIPER GRAPHITE - METALLIC



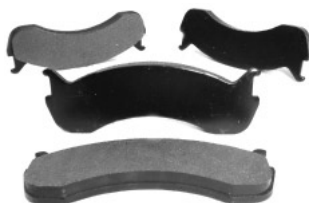
WA#	REPLACES	DESCRIPTION
<b>WAD459</b>	FMSI® # ENDING IN D459	HYDRAULIC DISC BRAKES FOR CHEVY®, GM® TRUCK AND VANS GRAPHITE METALLIC



WA#	REPLACES	DESCRIPTION
<b>WAD655</b>	FMSI® # ENDING IN D655	HYDRAULIC DISC BRAKES, 1995-2002 FORD® TRUCK E250, E350, E450, 1995-1998 FORD® TRUCK F250, F350 1998-2002 DODGE® B250, B2500, B350, B3500



WA#	REPLACES	DESCRIPTION
<b>WAD786</b>	FMSI® # ENDING IN D786	HYDRAULIC DISC BRAKES, BOSCH® 66MM CALIPER GRAPHITE - METALLIC PADS HAVE SPECIAL BACKING PLATE RETENTION SYSTEM



WA#	REPLACES	DESCRIPTION
<b>WAD786A</b>	FMSI® # ENDING IN D786A	HYDRAULIC DISC BRAKES BOSCH® 73MM CALIPER GRAPHITE METALLIC PADS HAVE SPECIAL BACKING PLATE RETENTION SYSTEM

## BRAKE HARDWARE KITS

### BREAK HARDWARE KITS



WA#		REPLACES EUCLID®	DESCRIPTION
<b>WAE5139</b>	R507004	E5139/1443	15" FRONT SINGLE ANCHOR PIN STYLE



WA#		REPLACES EUCLID®	DESCRIPTION
<b>WAE3869</b>	KIT 8029	E3869	15" X 4" ROCKWELL® Q FRONT STYLE



WA#		REPLACES EUCLID®	DESCRIPTION
<b>WAE9064</b>	KIT 8824HD	E9064	15" DOUBLE WEB, Q+ SHOE STYLE



WA#		REPLACES EUCLID®	DESCRIPTION
<b>WAE5481A</b>	R507057	E5481A	16.5" (EXTENDED SERVICE) STYLE



WA#		REPLACES EUCLID®	DESCRIPTION
<b>WAE10244</b>	R507064	E10244	16.5" ES-II (EXTENDED SERVICE) STYLE



WA#		REPLACES EUCLID®	DESCRIPTION
<b>WA1887ASHD</b>	R507022	E1887ASHD	EATON® 16.5" SINGLE ANCHOR PIN STYLE



WA#		REPLACES EUCLID®	DESCRIPTION
<b>WA3710SHD</b>	R507008	E3710SHD	16.5" FRUEHAUF®/PROPAR® XEM STYLE LATE DESIGN



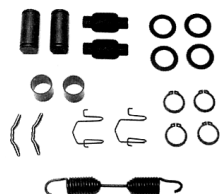
WA#		REPLACES EUCLID®	DESCRIPTION
<b>WAE6999S</b>	KIT 8000MB	E6999S	16.5" HD Q+ ROCKWELL® STYLE, LESS BUSHINGS

## BRAKE HARDWARE KITS (CONT.)

### BREAK HARDWARE KITS (cont.)



WA#		REPLACES EUCLID®	DESCRIPTION
<b>WA2769SHD</b>	KIT 8000HD	E2769SHD STYLE	16.5" HD Q+ ROCKWELL® STYLE



WA#		REPLACES EUCLID®	DESCRIPTION
<b>WAKIT4HD</b>	R509063	KIT 4HD STYLE	ROCKWELL® 16.5" P STYLE



WA#		REPLACES	DESCRIPTION
<b>WAE3895</b>		ROCKWELL® E3895	ROCKWELL® 16-1/2 HD QT STYLE SHORT KIT

WA#	MERITOR®#	EUCLID®#	LELAND®#	BWP®#	ARMADA®#	SIRCO®#	APPLICATION
WA1887ASHD	R507022	E1887ASHD	K42/K119	MK10	AR4311EHD	EK-1HD	16.5" EATON SINGLE ANCHOR PIN
WA2769SHD	KIT8000HD	E2769SHD	K128	MK39	AR4515QHD / AR4707HD	QK-1HD	16.5" HD Q+ ROCKWELL
WA3710SHD	R507008	E3710SHD	K135/K136	MK42	AR4515XHD	XK-3HD	16.5" FRUEHAUF PROPARG XEM-LATE
WAE10244	R507064	E10244	K375	MK105	AR4709ES2	ES-2	16.5" ES-II EXTENDED SERVICE
WAE3869	N/A	E3869	K283	MK79	AR1308QMA	RF-3A	15" Q FRONT
WAE3895	KIT8029	E3895					16.5" HD QT SHORT KIT
WAE5139	R507004	E5139	K263	MK77	AR1308E/AR1443TT	EF-1	15" FRONT SINGLE ANCHOR PIN
WAE5481A	R507057	E5481A	K295	MK84	AR4709ES	ES-2	16.5" ES EXTENDED SERVICE
WAE6999S	KIT8000MB	E6999S	K70A	MK39M	AR4515QMB		16.5" HD Q+ ROCKWELL-LESS BUSH.
WAE9064	KIT8824HD	E9064	K318	MK98	AR4702	RF-5	15" DOUBLE WEB Q+
WAKIT4HD	R509063	N/A			AR4515PHD	TK-1HD	16.5" P ROCKWELL



## HUB CAPS AND OIL CAPS

### HUBCAPS AND OIL CAPS

WA#	REPLACES	DESCRIPTION
<b>WA330-3009</b>	STEMCO® 330-3009	UNIVERSAL HUB CAP GASKET

WA#	REPLACES	DESCRIPTION
<b>WA340-4249</b>	STEMCO®	ALUM. HUB CAP, 6 HOLE, W/PLUG & GASKET

WA#	REPLACES	DESCRIPTION
<b>WA340-4975</b>	STEMCO® 340-4975	PLASTIC CAP FRUEHAUF® (PROPAR®) STYLE WITH O-RING

WA#	REPLACES	DESCRIPTION
<b>WA343-009</b>	STEMCO® 343-4009	ALUMINUM CAP 6-HOLE W/THE PLUG

WA	REPLACES	DESCRIPTION
<b>WA343-4024</b>	???	ALUM. HUB CAP, 6 HOLE

WA#	REPLACES	DESCRIPTION
<b>WA343-4075</b>	STEMCO® 343-4075	ALUMINUM CAP FRUEHAUF® (PROPAR®) STYLE

WA#	REPLACES	DESCRIPTION
<b>WA359-5990</b>	STEMCO® 359-5990	VENT PLUG FOR WA343-009 STYLE HUB CAP

## WHEEL BEARING & SEALS

PART #	PARTS IN SET	OIL BATH SEAL
SET 401	572/580	370022A
SET 402	572/582	
SET 403	592A/594A	370001A, 370021A
SET 404	592A/598A	370003A, 370005A
SET 405	653/663	370005A, 370036A
SET 406	3720/3782	
SET 407	3720/3782	
SET 408	32520/39595	
SET 409	45220/45280	
SET 410	45220/45284	370054A
SET 411	47620/47686	370023A, 370024A
SET 412	HM212011/HM212047	370001A, 370012A, 370011A
SET 413	HM212011/HM212049	370001A, 370033A
SET 414	HM218210/HM218248	370025A
SET 415	HM518410/HM518445	370065A
SET 416	45220/45291	
SET 417	45820/47890	
SET 418	H715311/H715334	
SET 419	H715311/H715343	
SET 420	H715311/H715345	370131A
SET 421	HM516410/HM516449A	370031A
SET 422	HM516410/HM516449C	370031A
SET 423	6420/6461A	370054A
SET 424	552A/555S	

## GLADHANDS & GLADHAND SEALS

### GLADHANDS



WA#	REPLACES	DESCRIPTION
<b>WA11450</b>	Philips® 12-010 Tectran® 1011 Velvac® 035038 Sloan® 441017 Midland® 11450 Bendix® 275150	Universal Gladhand (Aluminum) Style



WA#	REPLACES	DESCRIPTION
<b>WA11451</b>	Philips® 12-008 Tectran® 1011E Velvac® 035042 Sloan® 441016 Midland® 11451 Bendix® 278524	Emergency Gladhand (Red Aluminum) Style



WA#	REPLACES	DESCRIPTION
<b>WA11452</b>	Philips® 12-006 Tectran® 1101S Velvac® 035045 Sloan® 441015 Midland® 11452 Bendix® 278850 278523	Service Gladhand (Blue Aluminum) Style

### GLADHAND SEALS



WA#	REPLACES	DESCRIPTION
<b>WA10024</b>	SLOAN® 441736 MIDLAND® 10024 BENDIX® 248519	Protect-O-Lip Style



WA#	REPLACES	DESCRIPTION
<b>WA10028</b>	SLOAN® 441714 MIDLAND® 10028	Double Lip Seal



WA	REPLACES	DESCRIPTION
<b>WA9017R</b>	MERITOR®/EUCLID® E8658RBK PHILLIPS® 12-0162 BWP® M-3777 MIDLAND® DA9017R	POLYURETHANE, <u>RED</u> SEAL, FITS ALL GLAD HANDS



WA	REPLACES	DESCRIPTION
<b>WA9017B</b>	MERITOR®/EUCLID® E8658BBK PHILLIPS® 12-0161 BWP® M-3778 MIDLAND® DA9017B	POLYURETHANE, <u>BLUE</u> SEAL, FITS ALL GLAD HANDS



# 7-TERMINAL JUNCTION BOX & ELECTRO-PNEUMATIC SWITCHES

## 7-TERMINAL JUNCTION BOX



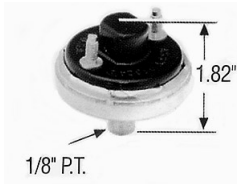
WA#	REPLACES	DESCRIPTION
<b>WA22040</b>	MIDLAND® BE22040	7-Terminal Style Strip with Grommets and Hardware

## LOW PRESSURE SWITCH



WA#	REPLACES	DESCRIPTION
<b>WA13240</b>	MIDLAND® BE13240 MIDLAND® 13240A	12 Volt or 24 Volt 1/8-27 NPTF Thread Single Pole - Two Terminal Design Actuates at 55 psi, Circuit normally closed at 0 pressure - Black

## LOW AIR SWITCH



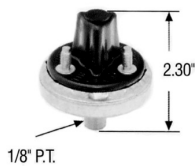
WA#	REPLACES	DESCRIPTION
<b>WA13241</b>	MIDLAND® BE13241 MIDLAND® 13241A	12 Volt or 24 Volt 1/8-27 NPTF Thread Single Pole - Two Terminal Design Circuit normally closed at 0 pressure Actuates at 66 psi - Brown

## SERVICE CIRCUIT STOPLIGHT SWITCH



WA#	REPLACES	DESCRIPTION
<b>WA13250</b>	MIDLAND® BE13250 MIDLAND® 13250	12 Volt or 24 Volt 1/4-18 NPTF Thread Two Terminal Design Actuates at 3-5 psi Circuit normally opens at 0 pressure - One Million Cycles at 30 amps - Black

## TRAILER EMERGENCY STOPLIGHT SWITCH



WA#	REPLACES	DESCRIPTION
<b>WA13255</b>	MIDLAND® BE13255A MIDLAND® 13255	12 Volt or 24 Volt 1/8-27 NPTF Thread, Actuates at 55 psi Single Pole - Double Throw - Three Terminal Design Circuit normally one open/one closed - Brown

## STOP LIGHT SWITCHES



WA#	REPLACES	DESCRIPTION
<b>WA2MR2014</b>	2MR2014	5 HOLE HORN/EMERGENCY STOP RELAY SWITCH
<b>WA2MR358A</b>	2MR358A	4 TERMINAL RELAY SWITCH
<b>WA1MR2413A</b>	1MR2413A	STOP LIGHT SWITCH, SL-4
<b>WA1MR2414A</b>	1MR2414A	LOW PRESSURE SWITCH, LP-3
<b>WA1MR2415</b>	1MR2415	LOW PRESSURE SWITCH, LP-3
<b>WA2MR338</b>	2MR338	RELAY SWITCH 3-TERMINAL
<b>WA1MR3544P2</b>	1MR3544P2	STOP LIGHT SWITCH, SL-4

# AIR HOSE ASSY., AIR HOSE SEPARATORS, 3 HOLE HOSE CLAMPS AND HOSE SUPPORT SPRINGS

## AIR HOSE ASSEMBLY



WA#	REPLACES	DESCRIPTION
<b>WA451036N</b>	SLOAN® 451036N MIDLAND® 11952 VELVAC® 022025 PHILIPS® 11-315 SET	1-RED / 1-BLUE 15 FT., 2-12" LEAD LENGTH O.D.: 1/2", FITTING SIZE: 1/2"

## AIR HOSE SEPARATOR



WA#	REPLACES	DESCRIPTION
<b>WA11548</b>	SLOAN® 451037 MIDLAND® 11548	3/8" DIAMETER HOSE HOSE SEPARATOR MOLDED WHITE (ENGINEER GRADE COMPOSITE)

WA#	REPLACES	DESCRIPTION
<b>WA11549</b>	SLOAN® 451038 MIDLAND® 11549	1/2" INSIDE DIA. HOSE HOSE SEPARATOR MOLDED WHITE (ENGINEER GRADE COMPOSITE)

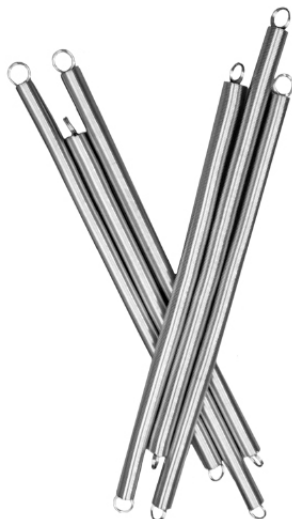
## 3 HOLE HOSE CLAMPS



WA#	REPLACES	DESCRIPTION
<b>WA11543</b>	SLOAN® 451000 MIDLAND® 11543	3 HOLE HOSE CLAMP 3/8" INSIDE DIA. HOSE

WA#	REPLACES	DESCRIPTION
<b>WA11544</b>	SLOAN® 451009 MIDLAND® 11544	3 HOLE HOSE CLAMP 3/8" INSIDE DIA. HOSE RUBBERIZED FOR USE W/ COILED NYLON HOSES

## HOSE SUPPORT SPRINGS



WA#	REPLACES	DESCRIPTION
<b>WA11600</b>	SLOAN® 451049 MIDLAND® 11600	SUPPORT SPRING LENGTH: 25.09" 1.13" COIL OUTSIDE DIA.
<b>WA11602</b>	SLOAN® 451047 MIDLAND® 11602	SUPPORT SPRING LENGTH: 12.67" 1" COIL OUTSIDE DIA.
<b>WA11603</b>	SLOAN® 451048 MIDLAND® 11603	SUPPORT SPRING LENGTH: 15.42" 1.08" COIL OUTSIDE DIA.

## 4, 6 & 7 - WAY SOCKETS

### 4, 6 & 7 - WAY SOCKETS



WA#	REPLACES	DESCRIPTION
<b>WA15-400</b>	PHILIPS® 15-400 COLE HERSEE® 1232 MIDLAND® BE23402	4-WAY ELECTRICAL RECEPTACLE



WA#	REPLACES	DESCRIPTION
<b>WA15-430</b>	PHILIPS® 15-430 COLE HERSEE® 1253 MIDLAND® BE23404	4-WAY ELECTRICAL SOCKET W/SPRING & CABLE



WA#	REPLACES	DESCRIPTION
<b>WA15-600</b>	PHILIPS® 15-600 COLE HERSEE® 1235 MIDLAND® BE23602	6-WAY ELECTRICAL RECEPTACLE



WA#	REPLACES	DESCRIPTION
<b>WA15-630</b>	PHILIPS® 15-630 COLE HERSEE® 1254 MIDLAND® BE23604	6-WAY ELECTRICAL PLUG W/SPRING & CABLE



WA#	REPLACES	DESCRIPTION
<b>WA15-720</b>	PHILIPS® 15-720 COLE HERSEE® 12063 MIDLAND® BE23703	7-WAY ELECTRICAL SOCKET W/SPLIT PIN 2 HOLE



WA#	REPLACES	DESCRIPTION
<b>WA15-730</b>	PHILIPS® 15-730 COLE HERSEE® 12092 MIDLAND® BE23784	7-WAY ELECTRICAL SOCKET W/SPRING & CABLE



WA#	REPLACES	DESCRIPTION
<b>WA15-740</b>	PHILIPS® 15-740 COLE HERSEE® 11178	7-WAY WEATHER BOOT GUARD

# PRESSURE PROTECTION VALVES, RV-1 & SERVICE EMERGENCY RELAY VALVE

## PRESSURE PROTECTION VALVES



WA#	REPLACES	DESCRIPTION
WA277147	BENDIX® PR-2™ 277147	SUPPLY PORT: 1/4" N.P.T. DELIVERY PORT: 1/4" N.P.T. 65 psi OVERALL LENGTH: 3-15/32"



WA#	REPLACES	DESCRIPTION
WA277148	BENDIX® PR-2™ 277148	SUPPLY PORT: 1/4" N.P.T. DELIVERY PORT: 1/4" N.P.T. 85 psi OVERALL LENGTH: 3-15/32"



WA#	REPLACES	DESCRIPTION
WA286500	BENDIX® PR-4™ 286500	ALL PORTS: 1/4" N.P.T. 85 psi, NON-ADJUSTABLE

## RV-1



WA#	REPLACES	DESCRIPTION
WA281857	BENDIX® RV-1™ 281857	CONSTANT SET PRESSURE LOWER THAN SUPPLY PRESSURE ADJUSTABLE - PRESET TO psi

## SERVICE EMERGENCY RELAY VALVE



WA#	REPLACES	DESCRIPTION
WA12352	BERG® 12352	PRE 121 TRAILERS 1974 & BEFORE

# TURN SIGNAL SWITCHES

## TURN SIGNAL SWITCHES



WA#	REPLACES	DESCRIPTION
<b>WA177-274</b>	FREIGHTLINER® 681-545-01-24	BUSINESS CLASS



WA#	REPLACES	DESCRIPTION
<b>WA177-275</b>	FREIGHTLINER® GRO-01-4811-77	FD/FLD CLASS, W/HAZZARD TAB



WA#	REPLACES	DESCRIPTION
<b>WA177-276</b>	FREIGHTLINER® A06-13867-002, A06-17126-000	10 WIRE HARNESS W/RELAY HANDLE FEATURES: BULIT-IN PUSH BUTTON HI/LOW BEAM.



WA#	REPLACES	DESCRIPTION
<b>WA177-277</b>	FREIGHTLINER® A14-13495-000	CENTURY CLASS



WA#	REPLACES	DESCRIPTION
<b>WA177-278</b>	FREIGHTLINER® A14-13495-005	BLACK, TURN SIGNAL SWITCH, CENTURY CLASS



WA#	REPLACES	DESCRIPTION
<b>WA177-279</b>	INTERNATIONAL® 1663595C91, 775863C93	MEDIUM/HEAVY DUTY DUTY S-SERIES, NON-CANCELLING SWITCH



WA#	REPLACES	DESCRIPTION
<b>WA177-280</b>	MACK® 1-MR-571	NEW RD/DM/MR MODELS, 7 WIRE HARNESS, W/ DIMMER SWITCH



WA#	REPLACES	DESCRIPTION
<b>WA177-281</b>	MACK® 1-MR-3412-P2	OLD RD/DM/MR MODELS, 1976-'88, 7 WIRE HARNESS, PILOT LIGHT FOR TURN SIGNAL & HAZZARDS



WA#	REPLACES	DESCRIPTION
<b>WA177-282</b>	MACK® 1-MR-575	ALL CH/CV/CX MODELS W/ INTERNAL MOUNT TO COLUMN, HAZZARD TAB

## TRANSIT BUS BRAKE CHAMBERS



WA#	REPLACES	DESCRIPTION
<b>WA246675</b>	Bendix® DD-3™ 246675	Diaphragm Type 30



WA#	REPLACES	DESCRIPTION
<b>WA287185</b>	Bendix® DD-3™ 287185	Left Hand Long Rod Air Operated Brake Actuator 2.87" Max Stroke



WA#	REPLACES	DESCRIPTION
<b>WA287186</b>	Bendix® DD-3™ 287186	Right Hand Long Rod Air Operated Brake Actuator 2.87" Max Stroke



WA#	REPLACES	DESCRIPTION
<b>WA287475</b>	Bendix® DD-3™ 287475	Left Hand Long Rod Air Operated Brake Actuator 2.87" Max Stroke



A#	REPLACES	DESCRIPTION
<b>WA287479</b>	Bendix® DD-3™ 287479	Right Hand Long Rod Air Operated Brake Actuator 2.87" Max Stroke



WA#	REPLACES	DESCRIPTION
<b>WA292711</b>	Bendix® DD-3™ 292711	Diaphragm Type 30



**WORLD AMERICAN**™

**[worldamerican.com](http://worldamerican.com)**

# SATISFACTION GUARANTEED



## Satisfaction Guaranteed

At World American we guarantee product quality, product performance, product value and customer service satisfaction.

All World American products:

- Meet or exceed OS/QS requirements.
- Are backed by a comprehensive warranty
- Have competitive pricing

Visit us online for more information at:

**[worldamerican.com](http://worldamerican.com)**  
**[midwesttruck.com](http://midwesttruck.com)**





# WARRANTY



MIDWEST TRUCK & AUTO PARTS, INC.™ warrants that all new MIDWEST TRUCK & AUTO PARTS, INC.™, except as otherwise provided herein, will be free from defects in material and workmanship for the first **6 months or 50,000 miles, whichever occurs first, with the sole exception of its heavy duty alternators and starters, the warranty for which shall extend for the first year, with no mileage limit.** THIS WARRANTY WILL NOT APPLY IF ANY PART HAS BEEN MODIFIED, DAMAGED OR IS DEFECTIVE AS A RESULT OF ANY ACCIDENT, MISUSE, USE IN COMPETITIVE APPLICATIONS, IMPROPER INSTALLATION, NEGLIGENCE, REPAIR OR ALTERATION.

COMPETITION PARTS ARE SOLD "AS IS", WITHOUT ANY WARRANTY WHATSOEVER. IMPLIED WARRANTIES, INCLUDING WARRANTIES OF MERCHANTABILITY OR FITNESS FOR A PARTICULAR PURPOSE, ARE EXCLUDED. THE ENTIRE RISK AS TO THE QUALITY AND PERFORMANCE OF SUCH PARTS IS WITH THE BUYER. SHOULD SUCH PARTS PROVE DEFECTIVE FOLLOWING THEIR PURCHASE, THE BUYER AND NOT THE MANUFACTURER, DISTRIBUTOR OR RETAILER, ASSUMES THE ENTIRE COST OF ALL NECESSARY SERVICING OR REPAIR.

**The MIDWEST TRUCK & AUTO PARTS, INC.™ parts warranty is voided if the part is used for competition or if it has been modified.**

To make a warranty claim on parts used in non-competitive applications, distributors should contact MIDWEST TRUCK & AUTO PARTS, INC.™ distributor for a Return Goods Authorization (RGA) Number. **No returns will be accepted without an RGA Number.** All parts should be returned to MIDWEST TRUCK & AUTO PARTS, INC.™ freight prepaid.

MIDWEST TRUCK & AUTO PARTS, INC.™ will issue a credit equal to the original purchase price for all defective parts covered by this warranty. In the event that a warranty claim cannot be substantiated by the MIDWEST TRUCK & AUTO PARTS, INC.™, the parts will be returned to the customer freight collect.

**THIS WARRANTY IS IN LIEU OF ALL OTHER WARRANTIES, EXPRESSED OR IMPLIED, INCLUDING, BUT NOT LIMITED TO, ANY IMPLIED WARRANTY OF MERCHANTABILITY OR FITNESS FOR A PARTICULAR PURPOSE, AND IN NO EVENT WILL MIDWEST BE LIABLE FOR INCIDENTAL, SPECIAL OR CONSEQUENTIAL DAMAGES INCLUDING, BUT NOT LIMITED TO, ANY LABOR COSTS.**

# NOTES

# NOTES

# NOTES